



WORK

BOOK

HAWORTH®

CONTENT

ABOUT HAWORTH	2
WHERE KNOWLEDGE MEETS DESIGN	23
BUSINESS FINGERPRINT	24
OUR LENS TOOLS	26
OUR IDEATION TEAM	28
OUR NETWORK	30
COLOURS & MATERIALS	32
WORKING TOGETHER VS. CO-WORKING	34
SINGLE BUT NOT ALONE	38
SIT, STAND, REPEAT	42
DESIGN FOR WELL-BEING	46
MEET OR GREET	50
OUR PRODUCTS	53
LOUNGE	54
CAPPELLINI	68
SEATING	80
DESK AND TABLES	104
TECHNOLOGY	122
LIGHTING	124
STORAGE & SPACE DIVIDERS	126
REFERENCES	136
LET'S GET IN TOUCH...	140
IMPRINT	143

HOW WE CAN HELP YOU

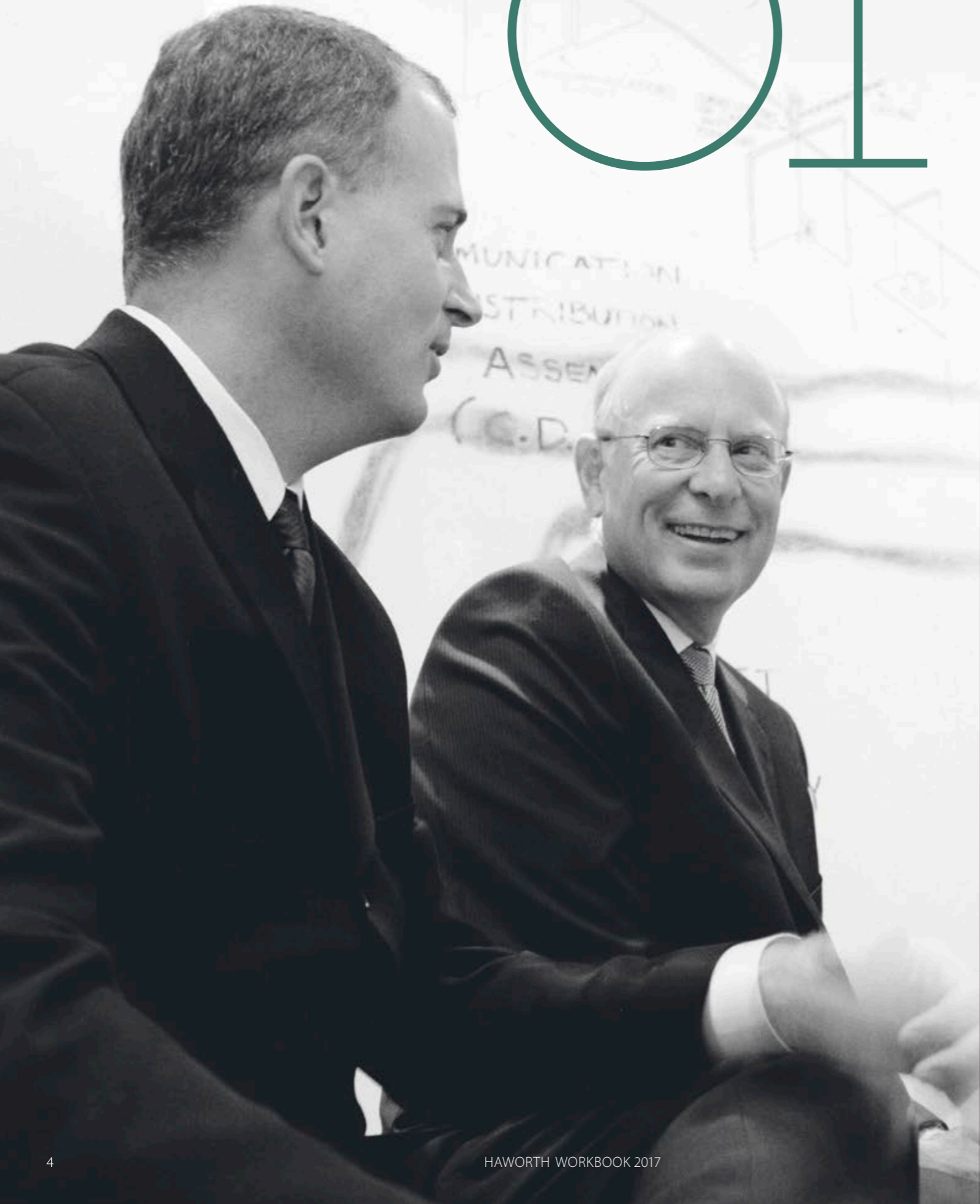
We believe inspiring spaces can enrich lives and businesses around the world. Space is an important investment in an organisation's people, productivity and culture. Together, we partner our clients to help ensure their environments work harder for them.



01

WE ARE FAMILY OWNED.

G.W. Haworth borrowed his parents' life savings to expand his woodworking operation in the family garage. The skilled craftsman's goal: make enough money to put his children through university. His engineering-minded son, Dick, devised a way to pre-wire partitions from within, an idea quickly mimicked by competitors. G.W.'s grandson Matthew is currently leading the company as it focuses on the development of new business segments in collaboration with Poltrona Frau Group.



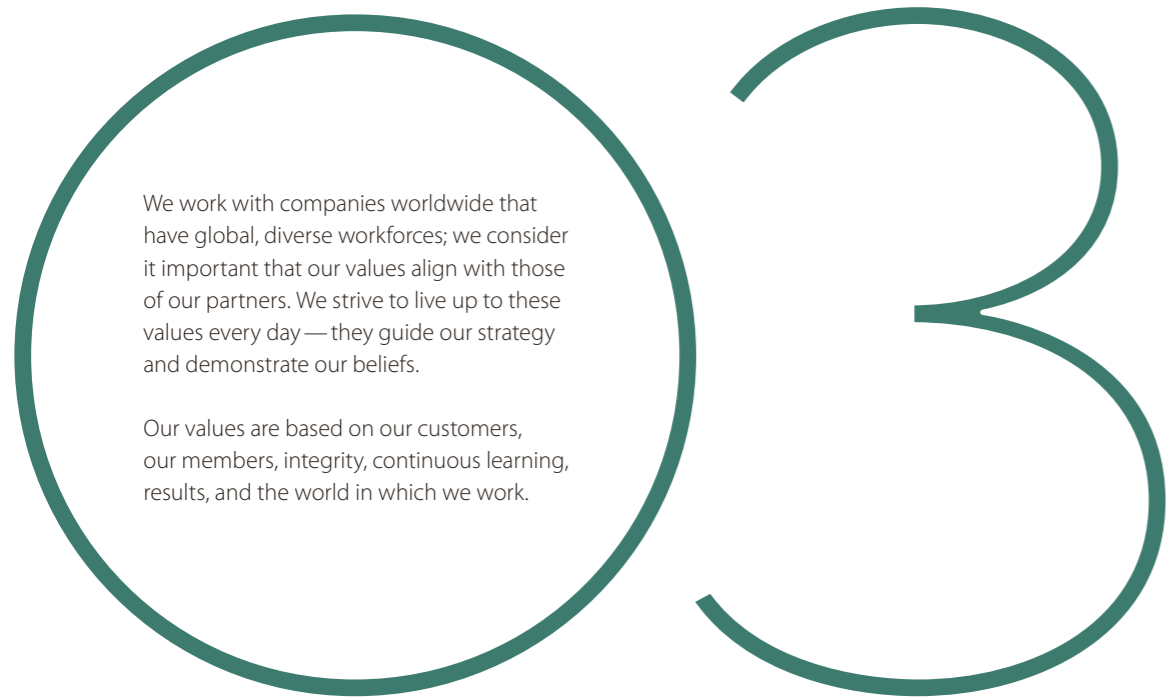
STRONG ROOTS MAKE US STAND INDEPENDENTLY.

As the world's largest privately-held furniture company, we retain the ability to make critical business decisions in support of our customers' — not shareholders' — needs. We remain agile so that we can evolve our business model and continually reinvest in the company, strengthening our position through strategic solutions, business growth opportunities and service capabilities.

Q2



WE LIVE OUR VALUES.

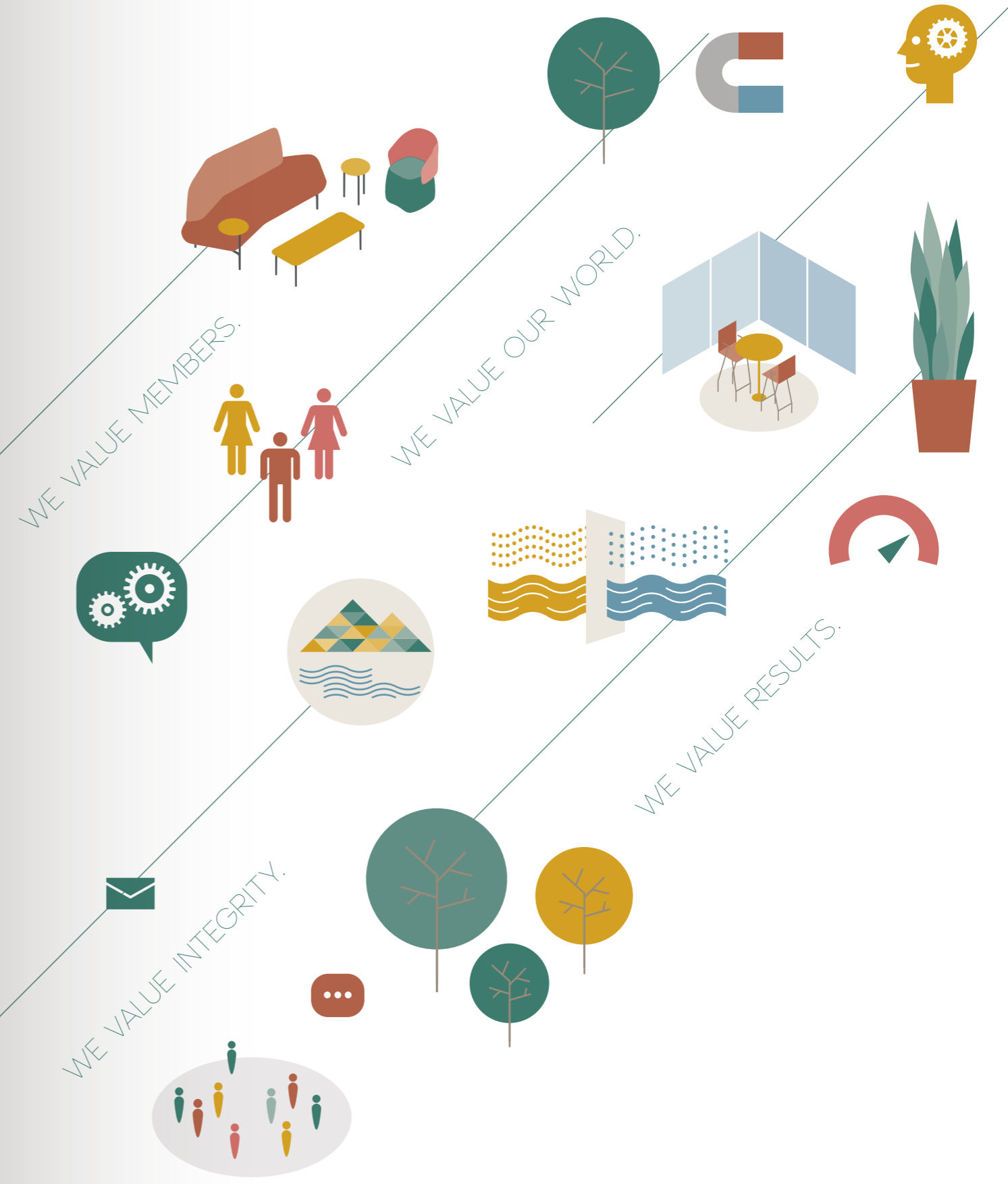


We work with companies worldwide that have global, diverse workforces; we consider it important that our values align with those of our partners. We strive to live up to these values every day — they guide our strategy and demonstrate our beliefs.

Our values are based on our customers, our members, integrity, continuous learning, results, and the world in which we work.



WE VALUE CONTINUOUS LEARNING.



WE VALUE MEMBERS.

WE VALUE OUR WORLD.

WE VALUE INTEGRITY.

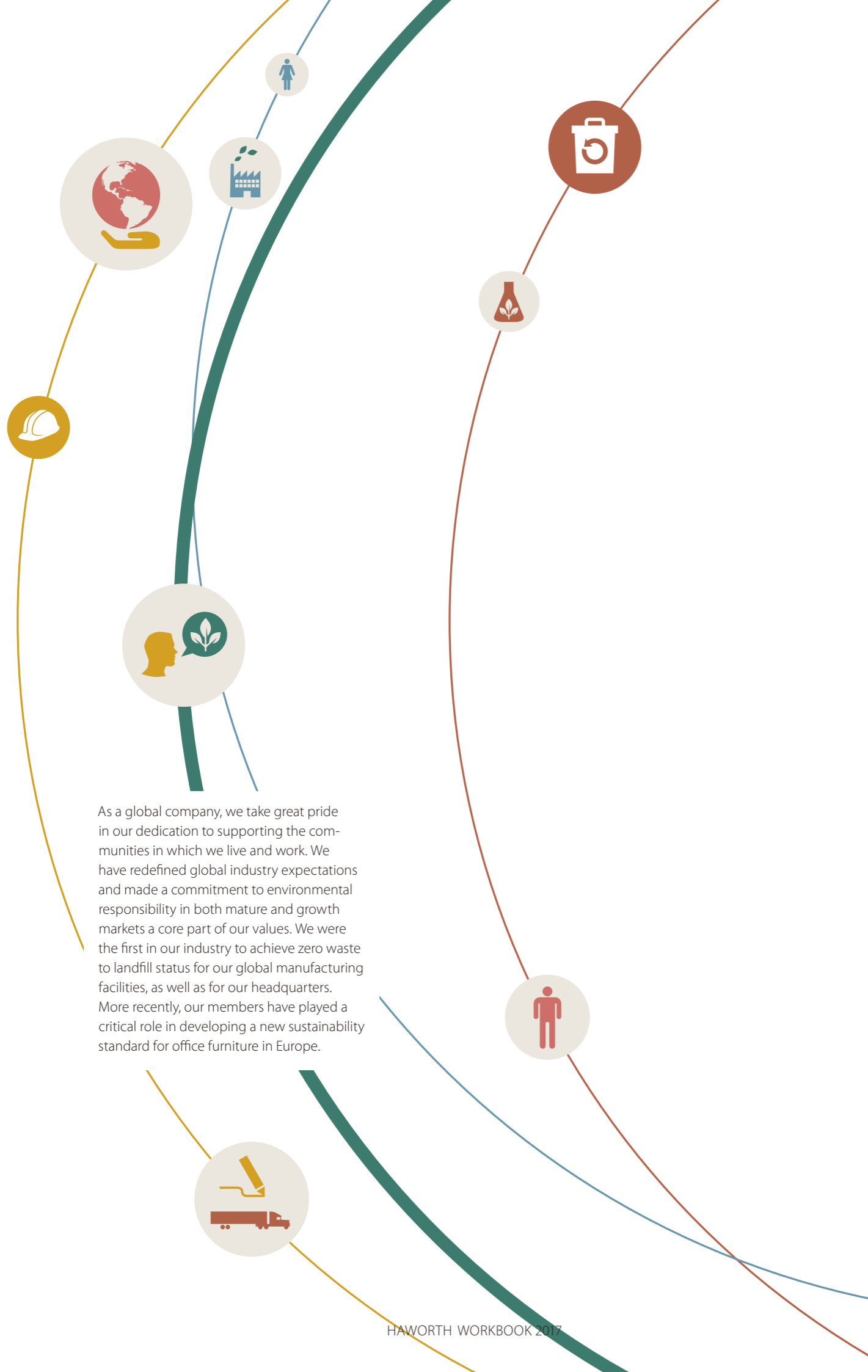
WE VALUE RESULTS.

04

WE ARE
WHERE YOU
NEED US
TO BE.

We have a tradition of building local relationships from the ground up, of taking responsibility for our actions, and of ensuring our customers receive the quality and service they expect from us, no matter where in the world they may be. We develop our solutions globally and locally with design teams located in China, Germany, Italy and the United States. A strategy that enables us to respond better to diverse market needs around the globe.

We also recognize the importance of accessibility and transparency in the manufacturing process. That's why we were the first in our field globally to hold 100% ownership of all of our ISO-certified factories around the world, including those in growth markets such as China and India.

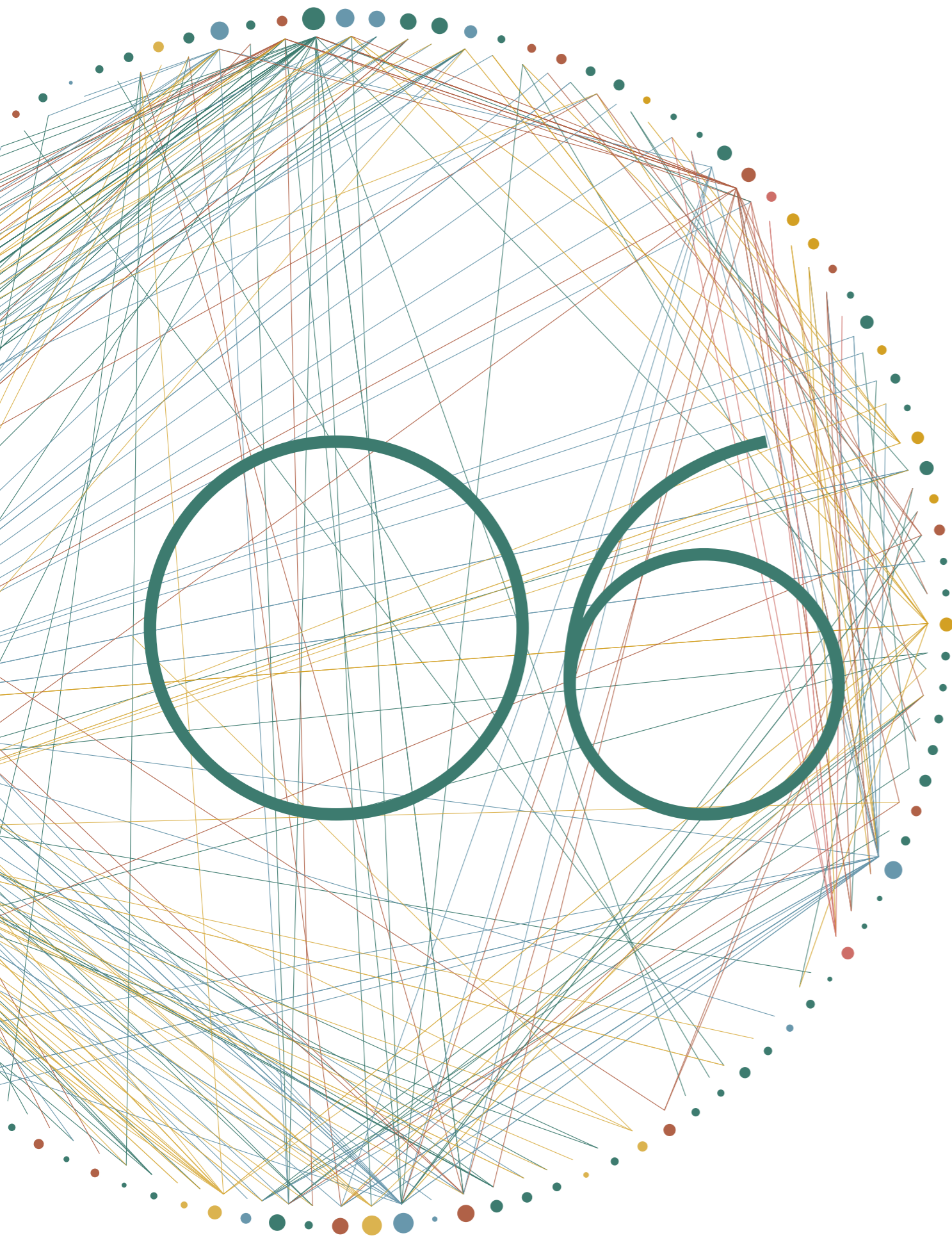


As a global company, we take great pride in our dedication to supporting the communities in which we live and work. We have redefined global industry expectations and made a commitment to environmental responsibility in both mature and growth markets a core part of our values. We were the first in our industry to achieve zero waste to landfill status for our global manufacturing facilities, as well as for our headquarters. More recently, our members have played a critical role in developing a new sustainability standard for office furniture in Europe.

05

WE ARE COMMITTED TO ENVIRONMENTAL AND SOCIAL RESPONSIBILITY.





WE INVEST IN KNOWLEDGE TO DRIVE INNOVATION.

OUR GLOBAL IDEATION TEAM—an internal group of strategists located across North America, Asia, Latin America and Europe—analyses workplace trends and assists organisations to integrate culture, work styles and strategies into their physical environments.

We also partner some of the world's leading research institutions, including the Royal College of Art, the Fraunhofer Institute and the Ross School of Business at the University of Michigan, to uncover and apply the latest knowledge in workplace research and human behaviour.



WE BELIEVE
WORKSPACES
SHOULD EVOLVE,
ORGANICALLY.

Our global perspective, **RESEARCH** and **IDEATION** team all assist in informing our design point of view. Our approach is dynamic — shifting and growing as we apply new knowledge to our design decisions. The outcome translates into integrated, adaptable interiors that evolve with organisational needs over time.

Not only is our design studio enriched and influenced by our global research, but it also benefits from collaborations with leading designers from around the world, such as Patricia Urquiola, Marcel Wanders and Mike & Maaik.

08

WE PROMOTE
DESIGNS THAT
INTEGRATE,
NOT JUST
COORDINATE.

Our portfolio includes a number of heritage brands offering a diverse range of iconic designs, functionality and aesthetic options.

We work together as a collective across a variety of spaces and environments — from offices and executive boardrooms to airports, hotels, lobbies and cafés.

cappellini

Pablo

G/AIN

WE PARTNER
WITH OUR CLIENTS
TO DELIVER
LONG-TERM VALUE.



The integration of people, facility and organisational performance helps to improve business success. We offer an integrated, adaptable portfolio that provides flexibility to make changes during the design process. Our services and products help align business needs to support changing culture, work styles and organisational demands.

WHERE KNOWLEDGE MEETS DESIGN

BUSINESS FINGERPRINT	24
OUR LENS TOOLS	26
OUR IDEATION TEAM	28
OUR NETWORK	30
COLOURS & MATERIALS	32
WORKING TOGETHER VS. CO-WORKING	34
SINGLE BUT NOT ALONE	38
SIT, STAND, REPEAT	42
DESIGN FOR WELL-BEING	46
MEET OR GREET	50

UNDERSTANDING THE UNIQUE IDENTITY OF EACH ORGANISATION

WHAT DRIVES YOUR ORGANISATION? CULTURE. A SPACE CAN ONLY BE EFFECTIVE AND SUPPORTIVE WHEN IT CATERS TO THE UNIQUE NEEDS OF A COMPANY'S CULTURAL IDENTITY.

An organisation's identity depends on three drivers: The **PLACE**—location and architecture impact space planning and deliver a framework that enables business. The **PERFORMANCE**—the value chain and business model of a company require a

certain structure to enable a proper workflow. The **PEOPLE**—what do employees think and, more importantly, how do they feel? Employee engagement and overall attitude impact company culture and help to shape its identity.

BUSINESS FINGERPRINT



SOLUTIONS BASED ON INSIGHTS

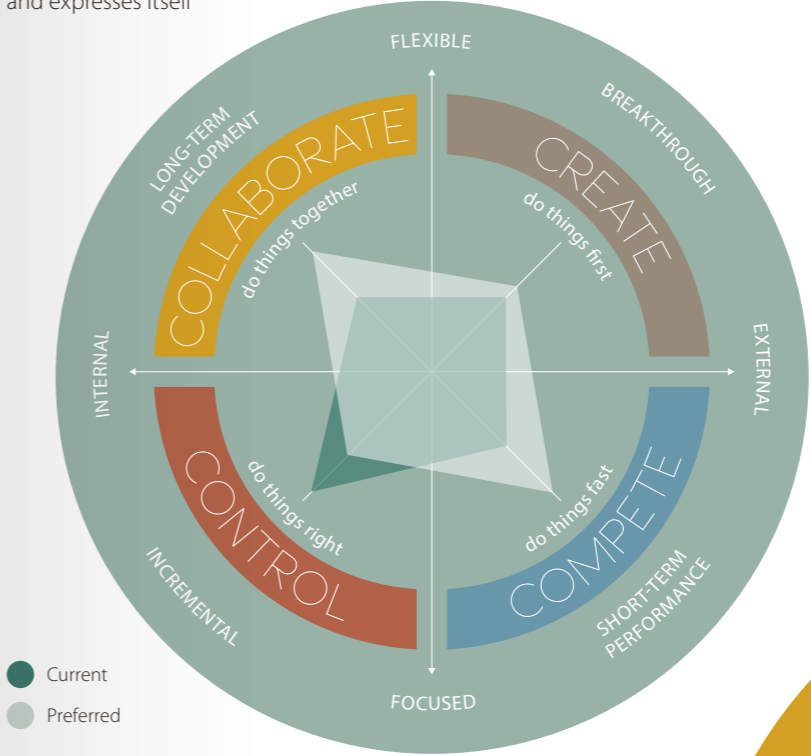
SPACE CAN IMPACT YOUR ORGANISATION'S PERFORMANCE — IT ENABLES INDIVIDUAL WORKSTYLES AND CAN ENRICH COMPANY CULTURE.

We begin with a conversation or a workshop to learn about your priorities. We then apply our LENS tools in the areas of organisational culture, work styles, and current and proposed office space in order to understand the organisation better. We evaluate the quality of the current space and to what level it supports our customer's performance. From there, we translate our findings into a strategic design proposal and formulate a design brief for the customer and the design team.

Our strategic design proposal is based on our understanding that organisations are moving from a traditional environment to an **ACTIVITY-BASED WORK** model. The manifestation or application of this design brief can vary according to department, individual preferences and unique culture profiles.

CULTURE LENS

Detecting how your organisation functions and expresses itself



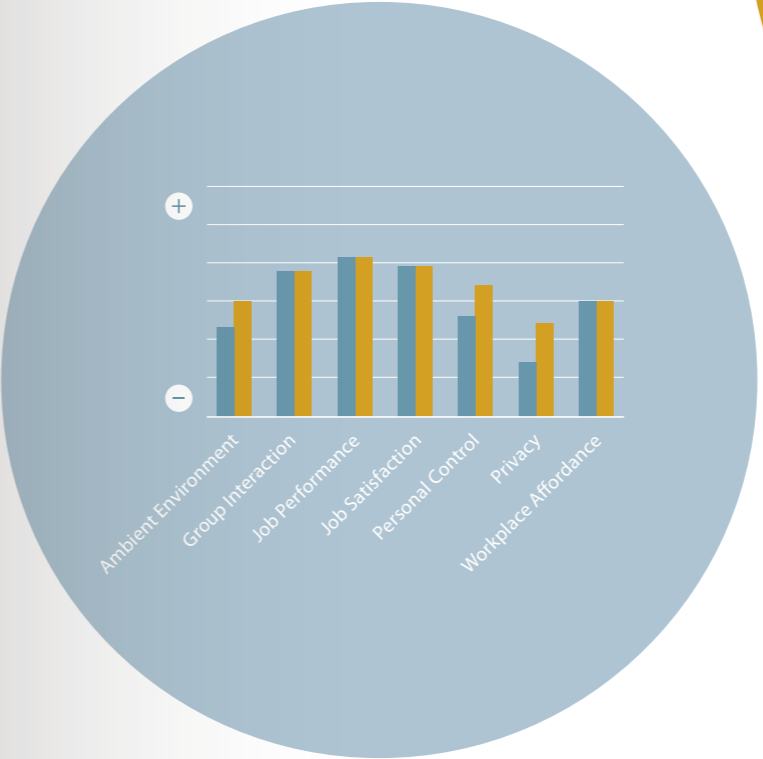
WORKSTYLE LENS

Identifying how workers perform daily activities



OFFICE LENS

Measuring employee perceptions of their environment



● Pre-occupancy
● Post-occupancy

OUR IDEATION TEAM TRANSFORMS WORKPLACE KNOWLEDGE INTO TANGIBLE SOLUTIONS.

Our ideation team is made up of a group of researchers and strategists who are dedicated to understanding what makes an organisation, its space and its employees perform better. Our team works closely with designers, contractors, real estate professionals, and business executives to promote a collaborative, creative, and seamless design process. From the outset, the ideation team promotes environments that meet today's requirements and adapt to tomorrow's needs.

"OUR VALUE IS OUR KNOWLEDGE, COMBINED WITH OUR COMPLETE SUITE OF PRODUCTS THAT INTEGRATE WELL TOGETHER; IT IS OUR ABILITY TO HELP OUR CUSTOMERS DESIGN THEIR SPACES TO BE SUSTAINABLE AND ADAPTABLE AS THEIR NEEDS CHANGE."

Franco Bianchi, president and CEO of Haworth, Inc.



THE IDEAL WORKSPACE NEEDS MORE THAN IDEAL FURNITURE — IT REQUIRES A HOLISTIC SOLUTION.

WE INVEST IN KNOWLEDGE IN ORDER TO IMPROVE OUR SOLUTIONS. ORGANISATIONAL REQUIREMENTS, PEOPLE'S BEHAVIOURS AND TECHNOLOGICAL DEVELOPMENTS DISRUPT OUR UNDERSTANDING OF THE IDEAL WORKSPACE.

DESIGN

OFFICE

CONNECTIVITY

WORKPLACE

ACOUSTICS

PRODUCT

RESEARCH

ARCHITECTURE

SPACES

SOCIAL BEHAVIOUR

We deepen our knowledge on social behaviour in collaboration with renowned research institutes such as the Royal College of Art and the Fraunhofer Institute. We connect with partners in related industries

from technology solutions to acoustic design to create cohesive, holistic environments. We believe that together with our partners, our solutions can be stronger.

SHOWROOMS

LIGHT

TECHNOLOGY

MATERIALS



Atmosphere can be created or enhanced through the use of dynamic colours, materials, and textures. Haworth's new surface collection reflects new accent paints, laminates, stains, and fabrics that work seamlessly together, providing a warmer, collaborative feel to the changing workplace.

Designer and architect Patricia Urquiola is loved around the world for her playful and poetic designs. Together with the Haworth Design Studio, Patricia collaborated on a new, unified palette of colours and materials for our European portfolio of products.

COLOURS & MATERIALS

THE EVERY DAY WORK ENVIRONMENT CAN BE BOTH AN EMOTIONAL AND SENSORY EXPERIENCE — DIRECTLY AFFECTING AN INDIVIDUAL'S PERSONAL ENGAGEMENT THROUGH DESIGN.



WORKING TOGETHER VERSUS CO-WORKING. IT'S ABOUT COMMUNITY.

Encourage informal gatherings

Collaboration matters — especially when it comes to organisations or departments that are project-based. Create spatial solutions that offer a variety of ways to meet and use space differently, but effectively.

Provide a culture of communication

An inspiring space has to enable communication, in one form or another. The ability to easily communicate not only enhances productivity, but can also increase a sense of community.



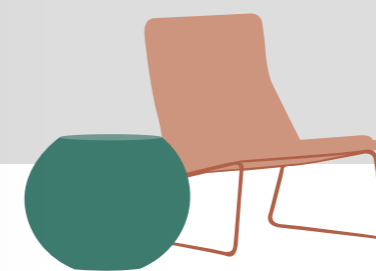
Dividing space with design intent

How a space is structured impacts its function and its atmosphere. Room dividing elements that also serve as storage pieces can add a sense of inviting warmth and increase the visual appeal of traditional work benches.

Assigned workplaces with personality

As tasks change throughout the day, so do your needs. The more flexible a workspace, the more autonomy it offers its user, creating a sense of ownership.





“THE MOST IMPORTANT
THING WE CAN DO
IS LISTEN TO
OUR CUSTOMERS.”

Dick Haworth, Chairman emeritus

“WE STRIVE TO HELP
CUSTOMERS REACH THEIR
WORKSPACE GOALS —
FROM IMPROVING
WORK EFFECTIVENESS
AND INNOVATION
TO BRAND EXPRESSION.”

Matthew R. Haworth, Chairman



SINGLE BUT NOT ALONE. IT'S ABOUT FOCUS.

Communication can happen anywhere

To improve communication you don't necessarily need larger or more rooms. Meaningful communication can happen when standing, sitting, walking or even eating.

Sheltered, but not isolated

A well-designed visual and acoustic barrier can offer opportunity for concentration in open spaces without the need for walls.

A home office at work

A residential approach to the office environment often features warm colours and a variety of natural materials and finishes. It is an atmosphere that encourages people to linger, to relax and to reflect on their work.

Design icons in the workplace

Design can express the identity and culture of an organisation. By leveraging innovative products that are design icons in their own right, a traditional office can be transformed to a space that fosters creativity and inspiration.





“I THINK THAT TODAY FOR A DESIGN-ORIENTED COMPANY THE MOST IMPORTANT THING IS TO BE CONTEMPORARY, AND TO BE CONTEMPORARY MEANS TO WORK AND TO INVEST ALWAYS IN DESIGN AND INNOVATION.”

Giulio Cappellini

“DESIGN IS A DISCIPLINE, WHICH IS ESPECIALLY CONNECTED WITH SOCIETY AND IN THE MOMENT THAT SOCIETY IS IN EVOLUTION OR INVOLUTION, THE DESIGN FOLLOWS THAT.”

Patricia Urquiola



SIT, STAND, REPEAT. IT'S ALL ABOUT MOVEMENT.

Make it your own

A traditional bench solution doesn't have to be conservative. With a clean design, colourful screens and accessories, the workplace can be personalised to meet the needs of its user.

Storage: As versatile as possible

Storage does not have to be merely functional; it can also serve as a design element by leveraging a broad selection of colours, sizes and finishes. With maximum flexibility your storage piece can be a space divider, a visual barrier, a personal locker, and much more.

Change your seat, change your perspective

Throughout the day, changing places and postures is not only healthier, it can also help improve productivity. These days, even the most important decisions can be made over a coffee, not only in a boardroom.

Bring your meetings to life

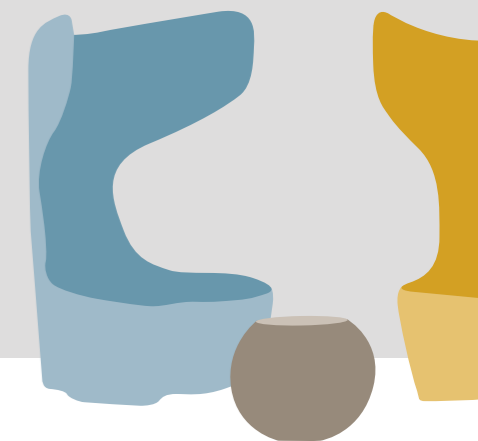
Collaboration is effective when everyone participates. Standing height meeting tables invite to actively take part in a discussion and to develop new ideas a part of a team.





“UNTIL THE DAY YOU RETIRE,
YOUR WORKPLACE WILL BE
AN INTEGRAL PART OF YOUR
LIFE, SO AS A REMINDER, MAKE
IT THE HAPPIEST IT CAN BE.”

Dr Mike O' Neill, Head of Global Research & Workplace Strategy



“WE DON'T SELL JUST TABLES
AND CHAIRS: SPACE MATTERS.
THROUGH OUR SCIENCE AND
KNOWLEDGE WE CAN HELP
OUR CUSTOMERS CREATE A
MORE EFFICIENT AND EFFECTIVE
WORKFORCE.”

Franco Bianchi, President & CEO Haworth



DESIGN FOR WELL-BEING. IT'S ABOUT CHOICE.

Create micro-environments with a single product

Lounge areas can offer shelter for more intimate situations, or open areas for informal gathering. With modular products, you can easily rearrange the function and feel of a space by adding, subtracting or rearranging pieces.

A modern library with benefits

When it comes to creative and knowledge-driven work, tactile experiences and vivid discussions are an important part of the process. Modern libraries combine both: a place to store knowledge and a place to display it for further development.

Make space work for you

Some spaces need a less structured approach in order to create the best atmosphere for their users. For example, screens that can be reconfigured to create workplaces, meeting areas or storage spaces, can help a space adapt quickly and easily to a unique function.



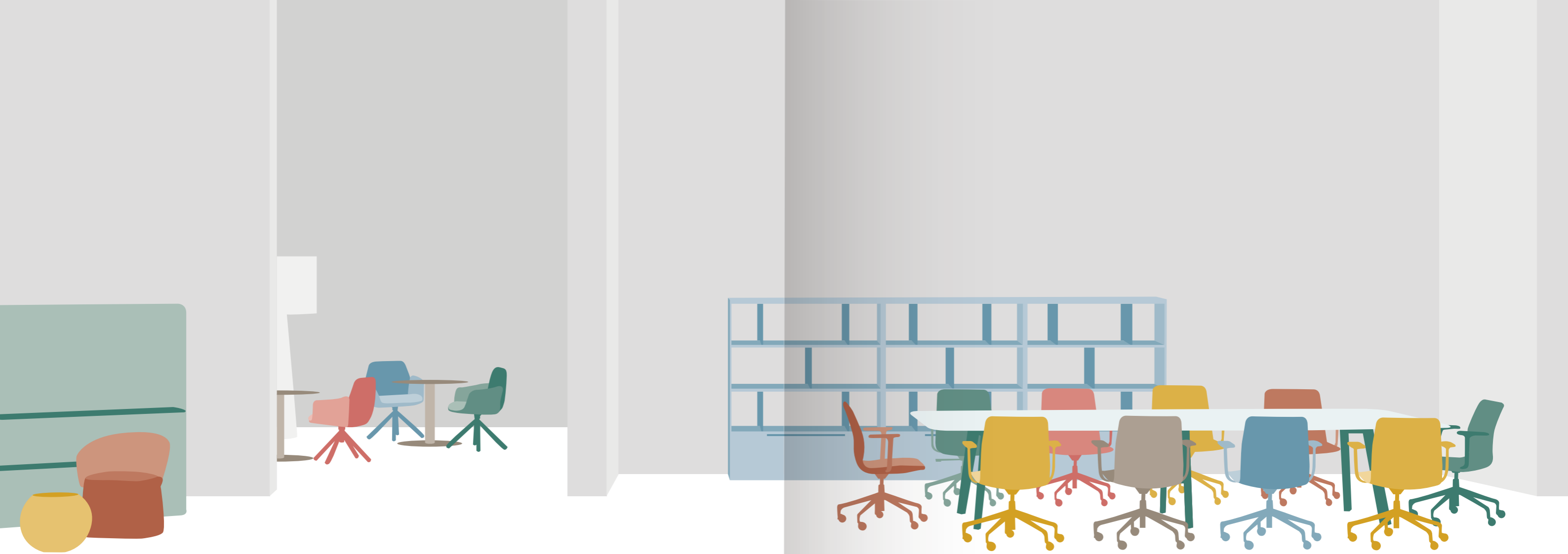


“A CAREFUL CURATION OF FURNISHINGS, COLOURS, MATERIALS AND LIGHTING, COMBINED WITH ACOUSTICS AND THE INTEGRATION OF TECHNOLOGY, CAN TRANSFORM YOUR SURROUNDINGS FROM...



... A BEAUTIFUL AND MEMORABLE SPACE INTO A DESTINATION WHERE PEOPLE GO BECAUSE IT MAKES THEM FEEL GOOD OR BE MORE PRODUCTIVE — A PLACE FOR WORK.”

Henning Figge, Vice President & General Manager International Operations



MEET OR GREET. IT'S ABOUT EXCHANGE.

Make every space a meeting space

As the ways we collaborate change, so do the spaces in which we collaborate. Ad-hoc conversations can quickly turn into relevant encounters, a bilateral appointment into a multi-person meeting. Spaces should reflect all the ways we meet.

Small talk matters

The café concept is a perfect paradigm for today's informal communities — casual, unplanned conversations are key hallmarks.

The formal meeting, revitalised

Traditional meeting rooms typically play a role in major business decisions. But formal meeting tables can be thoughtfully designed to include technological solutions and tactile elements to make it more human while remaining all-business.



OUR PRODUCTS



LOUNGE

HARBOR WORK LOUNGE	54
LTB LOUNGE	56
M_SIT	58
MEETYOU	60
OPENEST	62
WINDOWSEAT	66



CAPPELLINI

STOOLS	68
CHAIRS	70
LOUNGE CHAIRS	72
SOFAS	74
LIGHTING & SPACE SOLUTIONS	76
TABLES	78



SEATING

B_SIT	80
COMFORTO 59	82
DYNAFLEX	84
FERN	86
LIVELY — COMFORTO 29	90
POPPY	94
VERY TASK — COMFORTO 62	96
VERY FAMILY — COMFORTO 62	98
X 99 — COMFORTO 99	100
ZODY — COMFORTO 89	102



DESK & TABLES

EPURE	104
IMMERSE	106
INTUITY	110
KIRON	112
LYFT	114
PLANES	116
TIBAS	118
YOURPLACE	120



TECHNOLOGY

WORKWARE	122
----------	-----



LIGHTING

BRAZO	124
LIM	124
CIRCA	125
ATL LIGHT	125



STORAGE & SPACE DIVIDERS

BE_HOLD	126, 135
DRIFT	130
UNIVERSAL SCREENS	132
METAL PEDESTALS 2.0	134
PHARMACY CABINETS	134
HUGO	135



HAVE A SEAT.
EVERYTHING IS
AT YOUR
FINGERTIPS.

HARBOR WORK LOUNGE

- **DUAL WORK SURFACE** (seat wing and tablet arm) provides easy access to work tools
- Upholstered suede seat wing with **CUP-HOLDER** offers space for electronic tools, personal items, and a beverage
- **INTEGRATED SLIDING TABLET** serves as an active workspace for laptops or notepads
- **MATCHING OTTOMAN** doubles as a pull-up stool for quick collaboration or an auxiliary surface; adjusts 8 cm vertically
- Chair **SWIVELS 22°** to the left and right allowing movement while seated, automatically re-adjusts to centre upon exiting
- Designed by **NICOLAI CZUMAJ-BRONT**



reddot award 2017
winner

Technology has blended all factions of life — work, play, family and even travel. Individuals are no longer tethered to a desk, or even to an office. Harbor Work Lounge's dual work surface provides easy access to your work-tools. Its integrated sliding tablet offers an active workspace for laptop or notepads, while the upholstered suede seat wing provides a non-slip space for electronics, personal items and a beverage. A matching ottoman doubles as a pull-up stool or as an auxiliary surface for additional work or personal items. Choose from a fully or partially upholstered chair shell on a cast aluminium base. Harbor Work Lounge combines form with function, style with convenience — it's a platform that supports how you work, no matter where you are.



LTB LOUNGE

THE PERFECT FIT —
FOR WHEREVER
AND WHENEVER

The LTB range was conceived as an innovative solution to the current trend of evolving work styles. It provides new ways to embrace **TASK-BASED OR COLLABORATIVE ACTIVITIES**. LTB is not constrained solely to the office; it brings quality and comfort to **EXECUTIVE SUITES AND PUBLIC SPACES** alike.

From the morning team meeting to an informal training session, to an afternoon tea break and the end of day catch up presentation, LTB supports whatever you do throughout the day.

- System of **MODULAR SOLUTIONS** with a few simple components that can be easily reconfigured as needs evolve
- Suitable for **HOTELS, RESTAURANTS, UNIVERSITIES, AIRPORTS** and other public areas
- Designed by **CATHERINE LE TÉO** and **THIERRY BLET**



M_SIT

TIMELESS ...
M_SIT HAS
WHAT IT TAKES
TO BECOME
A CLASSIC.

m_sit offers a polished design solution whether in a **PRIVATE OFFICE, EXECUTIVE LOUNGE, OR PUBLIC LOBBY.** Its appeal lies in its quality workmanship and the combination of fabric or leather with a polished chrome frame, creating a crisp contrast. Optional extension tables provide additional surface area and serve as design accents.

A clean silhouette, **PREMIUM MATERIALS** manufactured to the highest degree and attention to design details make this a statement piece in any setting.

— Designed by
WOLFGANG C. R. MEZGER
— **IF DESIGN AWARD**
Winner 2006





MEETYOU

MeetYou is the answer to **INCREASING MOBILITY AND DIGITAL COMMUNICATION**, to **NON-TERRITORIAL WORK**, to the democratisation of office organisation, and to the increasing need for interpersonal exchange and dialogue. It is a modular space system that redefines **COLLABORATION** and inspires workers to experiment. The modular design enables to create a variety of different configurations according to your needs.

MeetYou creates **PRIVATE AREAS** for concentration — but remains open enough to maintain contact with the surrounding environment, offering an ideal platform for the **EXCHANGE OF IDEAS** without imposing restrictive hierarchies.

- **A SAFE SPACE:** MeetYou “exudes a feeling of security” for concentrated work, meetings and informal conversations
- **OPEN PRIVACY:** MeetYou creates private areas for concentration — but remains open enough to maintain contact with the surrounding environment
- MeetYou offers **EXCELLENT SOUND INSULATION** through the use of expansive acoustic walls
- **RECONFIGURABLE:** MeetYou enables an almost endless array of variations with a minimum number of components.
- Designed by **CODE2DESIGN — MICHAEL SCHMIDT**
- **IF DESIGN AWARD** Winner 2014



CONCENTRATE
AND STILL
REMAIN
CONNECTED



OPENEST

AN ENSEMBLE OF
INDIVIDUAL LOUNGE PIECES
THAT RESPOND TO THE
CONSTANTLY EVOLVING
NATURE OF WORK.





People at work have become more mobile — moving freely throughout the day, no longer tethered to a designated space. As a result, the ratio of individual to group workspaces has shifted in support of more collaboration. Designed for Haworth by Patricia Urquiola, Openest is both playful and poetic, pragmatic and functional. Its combined elements present a visual and tactile softness through the use of curved lines, textured fabrics and finishes, and upholstery stitching to invoke the craftsmanship of residential furniture.

Feather sofas and Chick poufs offer approachable comfort that adapts to people's needs. Plume screens made from familiar textiles put the body and mind at ease. Sprig tables accompany seating elements where surfaces are needed. No matter how the space is arranged, Openest provides functional furniture that looks neat and uncluttered, creating a refuge for working or relaxing.

- **VARIETY IN SPACES:** Feather sofas, Chick poufs, Sprig tables and Plume screens offer flexibility in space design.
- **RESTORE AND RE-ENERGISE:** Rekindle social connections with inviting spaces that draw people into them
- **APPROACHABLE COMFORT:** Openest elements provide a landscape with common characteristics of visual and tactile softness.
- Stitching features specifiable thread colour
- **CHICK POUFS: PUCK SWIVEL** Integrated tilt function to enable conversion into arm chair
- **CHICK POUFS: PULL TAB** Functional design detail to flip the backrest
- Designed by **PATRICIA URQUIOLA**





WINDOWSEAT

The proliferation of public areas and open space office plans demands modern, smart furniture solutions that become part of the architecture, while providing **MULTI-FUNCTIONALITY** within a concentrated space. Windowseat offers a unique perspective by allowing individuals to choose when, where and how they work. Suitable for both public and private spaces, Windowseat is designed to be a **COMFORTABLE REFUGE FROM THE HUSTLE** and bustle of lobbies, airports or noisy office environments.



WHERE DOES ARCHITECTURE STOP AND FURNITURE BEGIN?

By taking architectural elements and applying them to a chair, designers **MIKE & MAAIKE** have explored the idea of sub-architectural space — creating a “room-within-a-room”, complete with its own unique perspective. Windowseat incorporates architectural concepts at an individual level, providing an element of privacy within an open environment, while having the ability to switch between concentration and collaboration within a small footprint.

- Available in a **WIDE RANGE OF COLOURS**
- Canopy version allows for enclosure and an element of **ACOUSTICAL PRIVACY**
- **SELF-RETURNING** swivel mechanism
- Available in matching finishes in a range of base colours
- Designed by **MIKE & MAAIKE**





CAPPELLINI

STOOLS

FROM HOTEL BAR TO OFFICE TABLES, EVERY STOOL IS DESIGNED WITH DETAIL IN MIND.



Tate



Ribbon



Morrison Stool



Alodia



Tate Color



Hi Pad

- TATE STOOL** Jasper Morrison
- RIBBON** Nendo
- MORRISON STOOL** Jasper Morrison
- ALODIA** Todd Bracher
- TATE COLOR** Jasper Morrison
- HI PAD STOOL** Jasper Morrison

cappellini



CAPPELLINI

CHAIRS

ICONIC DESIGNS THAT
CAN DEFINE YOUR
WORKSPACE, RECEPTION,
CAFÉ OR BOARDROOM.



Lotus Low



Juli 09



Cap



Bac



Tate Color



Lotus High

- LOTUS LOW** Jasper Morrison
- JULI 09** Werner Aisslinger
- CAP** Jasper Morrison
- BAC** Jasper Morrison
- TATE COLOR** Jasper Morrison
- LOTUS HIGH** Jasper Morrison

cappellini



CAPPELLINI

LOUNGE CHAIRS

CREATE A WELCOME
DESTINATION WITH ORGANIC
SHAPES AND SMOOTH LINES
FEATURED IN CONTEMPORARY
AND ICONIC DESIGNS.



Dalia



Low Pad



Sunset



Drum



Wanders' Tulip



Orla

- DALIA** Marcel Wanders
- LOW PAD** Jasper Morrison
- SUNSET** Christophe Pillet
- DRUM** Mac Stopa
- WANDERS' TULIP ARMCHAIR** Marcel Wanders
- ORLA** Jasper Morrison

cappellini



CAPPELLINI

SOFAS

MEMORABLE ENVIRONMENTS ARE MADE WITH A STATEMENT — MAKE YOURS WITH STYLE AND COMFORT.

cappellini

- ORLA** Jasper Morrison
- ELAN** Jasper Morrison
- BASKET 011** Ronan and Erwan Bouroullec



Orla



Elan



Basket



CAPPELLINI

LIGHTING & SPACE SOLUTIONS

DETAILS MATTER. FROM SCALE, TO MATERIALITY AND INNOVATIVE PRODUCTION TECHNIQUES, CAPPELLINI DESIGNS CAN SET YOUR SPACE APART.



Gong



Bong



Cloud



Big Shadow



Meltdown

GONG Giulio Cappellini
BONG Giulio Cappellini
CLOUD Ronan and Erwan Bouroullec
BIG SHADOW Marcel Wanders
MELTDOWN Johan Lindstén

cappellini



CAPPELLINI

TABLES

ELEGANT, UNDERSTATED
DESIGNS THAT INSPIRE
AND INVITE YOU TO
ENGAGE, FACE TO FACE.



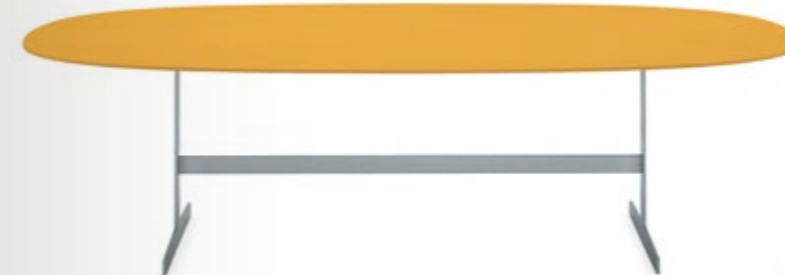
Big Break



Fronzoni



Branch



Simplon



Bac

BIG BREAK Studio Cappellini
FRONZONI '64 A.G. Fronzoni
BRANCH TABLE Jakob Wagner
SIMPLON Jasper Morrison
BAC Jasper Morrison

cappellini



B_SIT

The sled base chair, one of the most influential architectural developments of the **BAUHAUS PERIOD**, has been reinterpreted with b_sit designed by **MARTIN BALLENDAT**. The b_sit design boasts a rectangular profile which — together with the upholstered seat shell — results in a formal entity of **HIGH VALUE AND COMFORT**. b_sit combines aesthetics and functionality into a highly refined solution for office or home. It is ideal for furnishing boardrooms, client **RECEPTION AREAS**, dining rooms or VIP lounges.

The backrest offers support specifically for the lumbar region, while the natural spring of the sled base relieves pressure on the spinal column. The **UNIQUE SILHOUETTE** appears deceptively simple, but reveals a tremendous level of sophistication in its design.



CLEAN,
VERSATILE,
SOPHISTICATED.



COMFORTO 59

FINALLY —
A REVOLUTIONARY
TASK CHAIR THAT
MAKES IT EASY TO
FORGET THAT
YOU'RE SITTING.

The Comforto 59 family of chairs distinguishes itself through sleek design notes: swivel chairs featuring castors and glides; visitor's chairs on a sled base or with legs; meshback or fully upholstered featuring fabric or leather. A wide range of colours for both the frame and the materials ensures you can customise your perfect sitting experience.

Each individual is unique: size, weight, posture and daily tasks are just a few factors at play in defining the right solution for your task chair. The solution: Comforto 59's automatic weight control mechanism transfers the user's body weight via an articulated system to the backrest, which then provides the perfect counter pressure to ensure balanced, dynamic seating comfort. Finely tuned controls are integrated into the seat frame and their clear pictographic design makes adjusting the seat a straightforward task.

- Automatic **WEIGHT CONTROL**
- **BACKREST** can be locked in four positions
- Adjustable seat depth and height
- Adjustable forward tilt
- A **SLIDE CONTROL** adjusts the contact pressure on the **BACKREST**
- **ASYMMETRIC LUMBAR** settings
- Designed by **SIMON DESANTA**



CLEAN AND SIMPLE LINES,
TOGETHER WITH THE
LIGHTLY CONCEALED AND
INNOVATIVE FUNCTIONALITY
OF THE AUTOMATIC WEIGHT
CONTROL, ALLOW EACH
INDIVIDUAL A CUSTOMISED
SITTING EXPERIENCE.



DYNAFLEX

EXPERIENCE FREE MOVEMENT WITH THE “DYNAFLEX EFFECT”



Dynaflex succeeds where no current competitor in its class has before: it offers freedom of movement along with corrective support. The synchronised motion sequence of the back and the seat provides maximum support for body movement; the **PATENTED WEIGHT-DEPENDENT MECHANICS** assist movement when seated, as they coordinate the interaction between the backrest and seat perfectly.

Dynaflex is available as both a **FIXED-BACK** and **FLEXIBLE-BACK** solution to meet user demand. In addition to classic options, such as headrests, coat hangers and lumbar adjustment, height-adjustable asymmetrical lumbar support and 4D armrests.



- Flexible back allows **MOVEMENT IN EVERY DIRECTION**
- **WEIGHT-ACTIVATED** synchronised mechanism with seat rocks detects the need for support and resistance
- **ASYMMETRIC LUMBAR SUPPORT** applies the correct amount of pressure to the lower back and, thus, helps to straighten the spine and keep an upright position
- **4D ARMRESTS**
- Designed by **SIMON DESANTA**



FERN

A NEW MOVEMENT

A NEW MOVEMENT —
INSPIRED BY NATURE,
DESIGNED WITH
EDGELESS COMFORT.

The FERN task chair is alive, in tune with your every movement. Grounded in extensive ergonomic research, FERN's design puts you at the centre, with **ERGONOMIC INNOVATIONS** that provide **TOTAL BACK SUPPORT**, edgeless comfort and free movement. The result is a next generation sitting experience that is distinctively **RESPONSIVE** to each individual. FERN works with you — not against you — so you can sit better, work better and feel better.



- **FERN** 3-point synchronised mechanism with back-stop in 5 positions
- 4D- or fixed armrests
- **FORWARD TILT** (optional)
- **LUMBAR SUPPORT** — height adjustable (optional)
- **FLEXIBLE BACKREST** instead of torsional rigidity
- Infinity Edge™
- Wave Suspension™
- **DESIGNED** by Haworth Design Studio and ITO Design



reddot award 2017
winner



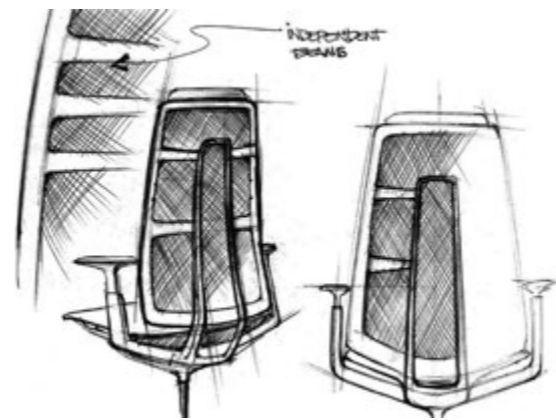
GERMAN
DESIGN
AWARD
NOMINEE
2018



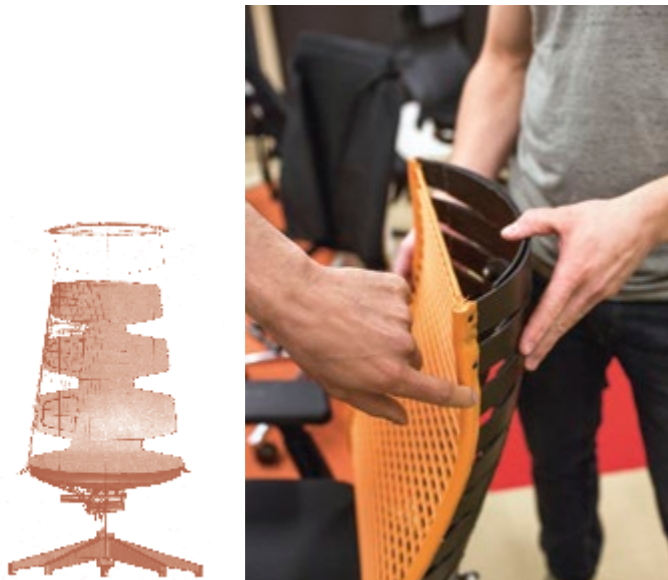


MAKING-OF FERN

HOW BEHAVIOUR
AND SITTING
INSPIRE A NEW
MOVEMENT.



From rapid prototyping to rigorous testing and refinement, our products are a true labour of love and a testament to the power of science and design.



THE CHALLENGE:
CREATING A BACK
THAT SUPPORTS
AND ADAPTS TO
ITS USER AT THE
SAME TIME.



FERN's Wave Suspension™ system is the heart of the chair and the key to its back comfort and flexibility. From all appearances, the back looks simple. But inside is a high level of science, engineering, and innovation that enables FERN to work with you, not against you.

Based on over ten years of scientific research, FERN is the first chair certified by US Ergonomics consulting firm — and continually ranked the most comfortable by users.



LIVELY

COMFORTO 29

THE DEMOCRATIC SOLUTION THAT ENSURES WELL-BEING AT WORK, DEVELOPED FOR GLOBAL PLAYERS AS WELL AS FOR SMALLER COMPANIES.

Today's working environments are as different as the personalities of their users. When it comes to sitting, the individual's well-being depends on ergonomic features of the task chair. LIVELY is the newest technology at an affordable price — for everyone who needs a healthy back for a long working life. The task chair is equipped for optimum ergonomics and clearly sets itself apart from the competition in its price class. The synchronous mechanism with automatic weight regulation exemplifies the Haworth concept: provide ergonomic support for price conscious customers across all professions.

- Designed by **STEVE NEMETH**
- **REDDOT DESIGN AWARD** winner 2013
- **GERMAN DESIGN AWARD** Nominee 2014



- **WEIGHT-DEPENDENT** synchronous mechanism
- Allows dynamic seating that **SUPPORTS MOVEMENT**
- **AFFORDABLE:** based on our expertise, we offer value for excellent ergonomics



ONE FAMILY FOR MULTIPLE PURPOSES. LIVELY IS UNIVERSAL, FITTING INTO EVERY TYPE OF LANDSCAPE.

The **LIVELY** visitor's chair offers a sophisticated ergonomic solution without a large price tag. Available as a **FOUR-LEGGED** and a **SLED BASED MODEL**, on glides or castors, it is highly recommended for meetings or training sessions. It is **STACK-ABLE** up to ten chairs high and offers **DIGITAL SEAT NUMBERING** for easy asset management.

STACKABLE UP TO
10



POPPY



THE CHAIR THAT FINDS A HOME IN ANY PLACE.

Today's thinkers, creators and doers seek meaningful spaces that support their work needs while remaining both inviting and purposeful. Poppy was created for those spaces, embodying the **WELCOMING AURA** of **RESIDENTIAL COMFORT AND WARMTH** we crave at work.

Poppy is always the perfect host in seating: comfortable and cosy, flexible and accommodating, expressive and charming.

- **COMFORTABLE AND COZY** with soft fabrics developed by Patricia Urquiola
- **FLEXIBLE AND ACCOMMODATING**, with a wide range of colours
- Available with 5-star and 4-star-base or with four-leg wood base
- **DESIGNER** Patricia Urquiola



VERY TASK

COMFORTO 62



THE TOP CHARACTERISTICS OF THE VERY FAMILY INCLUDE ITS UNIVERSAL APPEAL, WIDE SCOPE OF APPLICATIONS, HIGH LEVEL OF RECYCLABILITY AND A WIDE RANGE OF COLOURS.

Very represents an **AWARD-WINNING, GLOBAL** seating family. Its unobtrusive design makes it a chair for all settings, from office to public and home spaces. Very draws on Haworth's vast experience of **ERGONOMIC SEATING SOLUTIONS** and features **SCIENTIFICALLY TESTED** functions, such as the **PATENTED** asymmetric lumbar support for the lower back and the **USER-FRIENDLY** synchronous mechanism.

- **3-POINT-SYNCHRONISED MECHANISM**
- Adjustable seat height
- **ERGONOMIC** waterfall edge design
- Intuitive reclining
- Flexible backrest
- **ASYMMETRICAL LUMBAR SUPPORT**
- Highly recyclable
- **AUTOMATIC FORWARD TILT**
- Designed by **HAWORTH DESIGN STUDIO**





VERY FAMILY

COMFORTO 62

THERE'S A VERY FOR EVERY SPACE.



Very seating has built-in intelligence for user comfort. The Very seminar and conference chairs provide intuitive recline, ensuring user weight is absorbed and distributed to provide natural support. Its side-to-side torsional flex allows the backrest to follow the user as they move, increasing mobility and comfort when reaching sideways for objects. Available in the Conference, Seminar, and Side models.

Part of a friendly, highly sustainable seating family, Very stack chairs infuse temporary seating with global design and science-led comfort. It has up to 98% recyclable content and is **GREENGUARD®** Gold Certified. Very can easily contribute toward your **LEED®** credits, too. Very smart.

Upholstered for large group conferences or high-density stacking for temporary crowds — and all points in between — Very delivers comfortable, convenient and collaborative seating.

- **CART, STORE,** and move **UP TO 40** wire stacking chairs with the Very stacking cart
- Very Seminar and Side Chairs can also stack up to 8 high
- Wire stacking chairs stand 10-high on floor or 40-high on cart
- Side and Seminar chairs stack 5-high on floor or 8-high on cart
- Intuitive recline
- Castors or **HARD FLOOR GLIDES**



reddot design award
winner 2010





X 99

COMFORTO 99

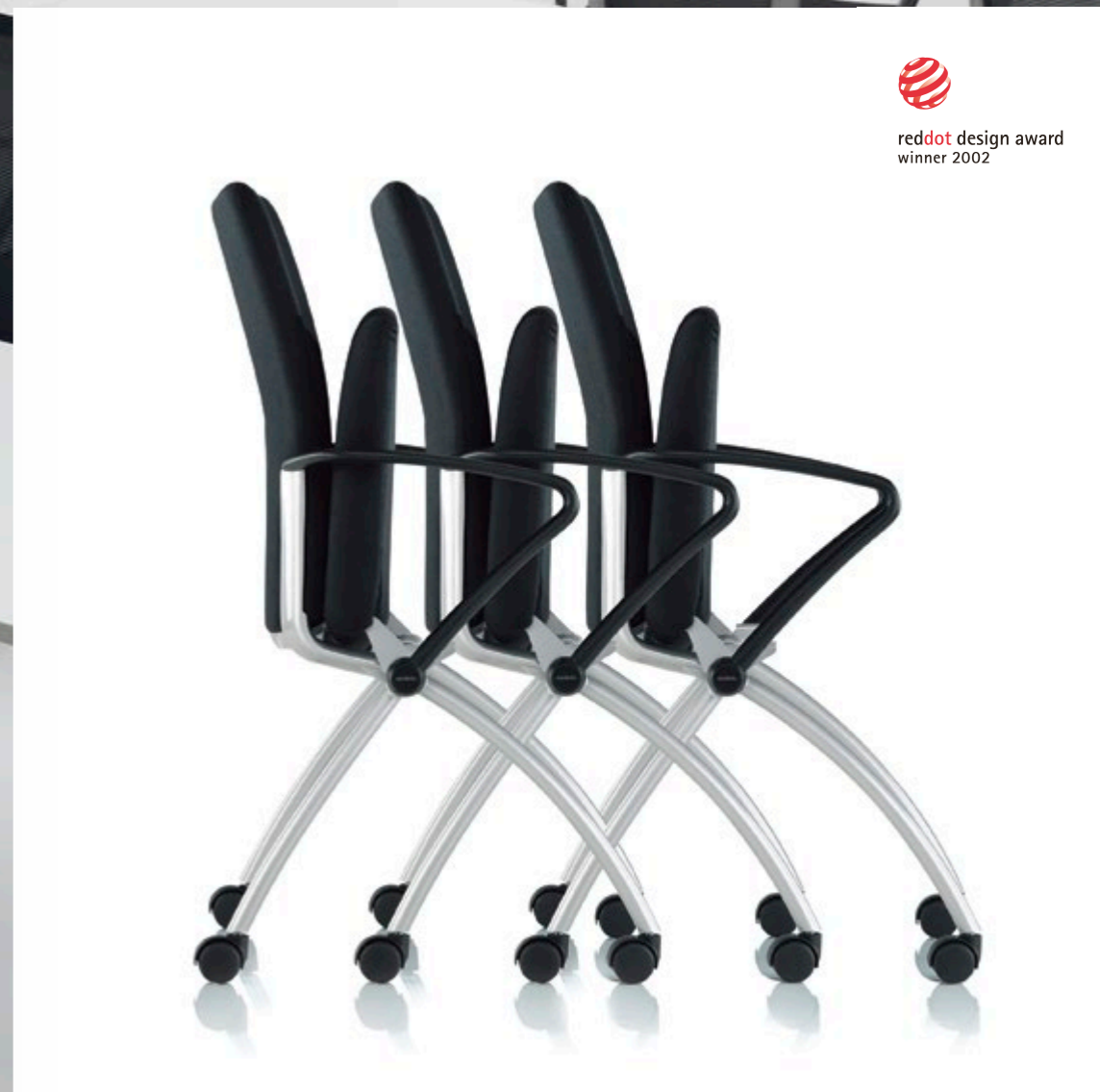


Developed by **ITO DESIGN** and the Haworth team, the X99 Series exhibits a dynamic, design-oriented corporate look for meeting rooms, private office or training areas.

The combination of optical transparency, a **CHARACTERISTIC PROFILE** and optimal ergonomic features makes this a coherent, functional, and aesthetic series.

The seminar chair boasts a **“NESTING” DESIGN FEATURE** that allows it be efficiently stored, while castors make room reconfigurations simple.

X 99 Series is highly responsive to all body movements, and every personal adjustment has been precisely engineered — it represents a **BRILLIANT INTEGRATION OF DESIGN WITH PERFORMANCE.**



reddot design award
winner 2002



ZODY

COMFORTO 89

FORM FOLLOWS SCIENCE: A HIGH-PERFORMANCE TASK CHAIR BLENDS SCIENCE-BASED WELLNESS AND COMFORT WITH SUSTAINABILITY AND AWARD-WINNING INTERNATIONAL DESIGN.

Design starts with a vision, science with a question. Haworth's vision was a mid-priced task chair ergonomically superior to anything else on the market. The critical question was: "How do users define comfort?", followed by "Is there anything about seating that we do not yet know?".

The Human Performance Institute of Western Michigan University (WMU) was entrusted with the research while ITO Design and the Haworth Design Studio collaborated to realise the scientific findings in the form of the Zody chair.

The product of extensive research and development, Zody is the only chair ever to be endorsed by the American Physical Therapy Association (APTA).

The PAL™ Back System: The lumbar region gets individual support by a simple rotation forward. The latter can be adjusted asymmetrically if needed. Furthermore, the passive pelvic support raises the pelvis, thus optimising the user's body posture.

Designed with Haworth's sustainability values, Zody chairs are manufactured using recycled content and offer a high degree of recyclability at the end of life. They are **GREENGUARD®** Gold Certified and can contribute to **LEED®** accreditation.

- **PAL™ BACK SYSTEM** for asymmetric lumbar support
- **PELVIC SUPPORT.** Supports and helps rotate the pelvis forward to maintain the natural spine shape of an ideal S-curve
- **ADJUSTABLE 4D ARMRESTS**
- **ERGONOMIC SEAT,** optimally shaped seat surface, available with seat depth adjustment
- **TECHNOGEL® SOFT LITE UPHOLSTERY** (optional) ensures a point elastic relief of the pressure
- **3-POINT-SYNCHRONISED MECHANISM** signifies dynamic sitting
- Designed by **ITO DESIGN**





EPURE

EPURE ADAPTS
SMOOTHLY TO
THE EVOLUTION
OF YOUR
ORGANISATION.

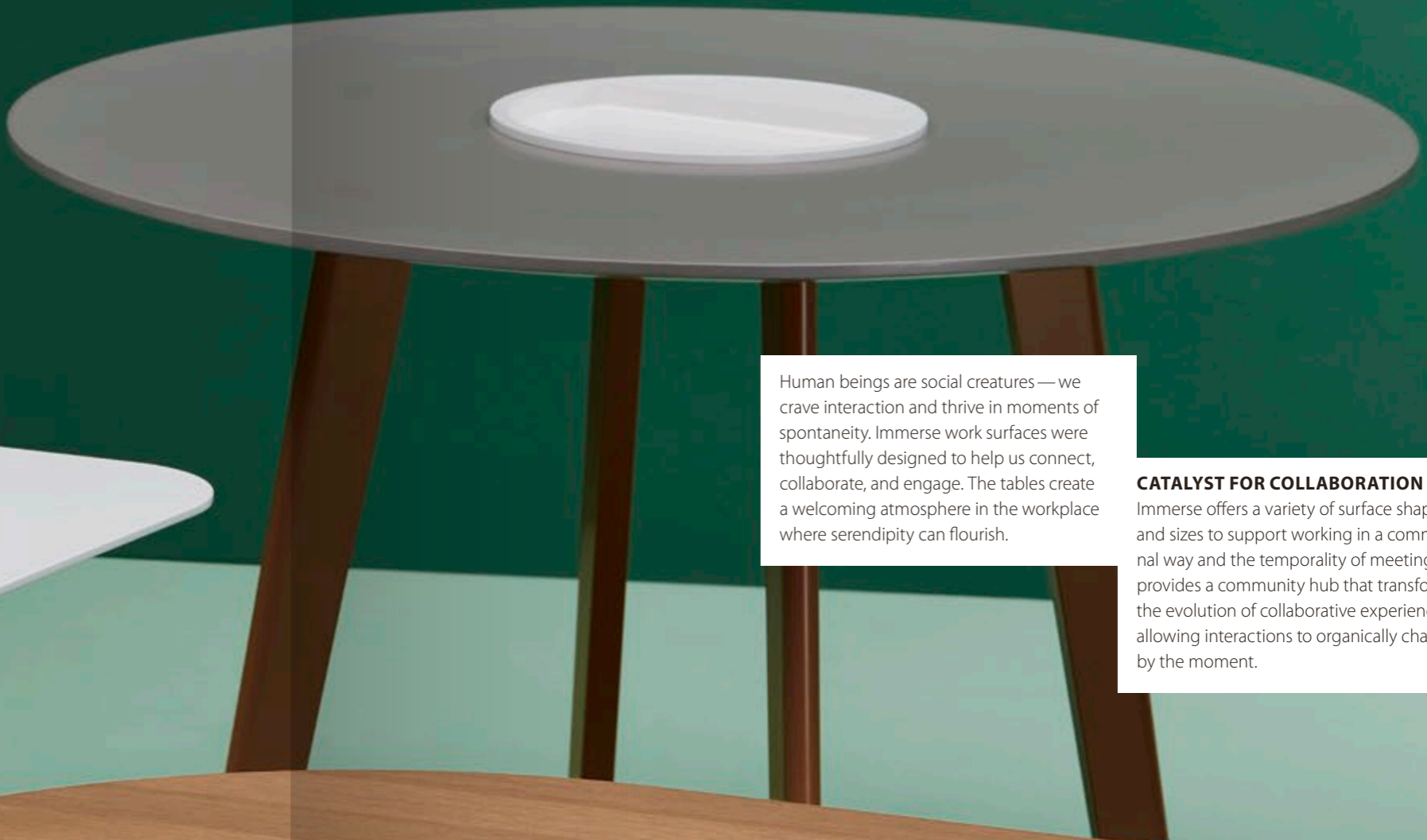
Adapt your working environment to the culture of your teams. Designed by Emmanuel Dietrich the innovative concept of Epure ensures unrivalled flexibility and practicality, whilst limiting the number of structural components. Furniture fleet management is efficient and greatly reduces environmental impact. Flexibility to reorganise workspace is provided without compromising ergonomics and functionality.

- **ISOPLAN**® structural tabletop
- Shareable universal leg
- **TOOL-FREE ASSEMBLY** with **DIABOLO**® **KNOB**
- Height adjustment
- Power-enabled
- **TWIN EDGE**®
- **STORAGE** Adjust and equip your desk as you wish
- **MULTIPLE APPLICATIONS:** management, meeting, individual or shared workstation, bench
- Designed by **EMMANUEL DIETRICH**



IMMERSE

IMMERSE WORK SURFACES WERE THOUGHTFULLY DESIGNED TO HELP US CONNECT, COLLABORATE, AND ENGAGE.



Human beings are social creatures — we crave interaction and thrive in moments of spontaneity. Immerse work surfaces were thoughtfully designed to help us connect, collaborate, and engage. The tables create a welcoming atmosphere in the workplace where serendipity can flourish.

CATALYST FOR COLLABORATION
Immerse offers a variety of surface shapes and sizes to support working in a communal way and the temporality of meetings. It provides a community hub that transforms the evolution of collaborative experiences, allowing interactions to organically change by the moment.

- **A VARIETY** of shapes, sizes, and levels makes a space more inviting, supporting different activities, and nurturing a sense of community
- **VARIATION IN TABLE HEIGHTS** to create opportunities for combined sit/stand postures so everyone is at a visible level
- **SHIFT OPTION** allows for people to split teams at adjacent worktops with varied heights
- **AN ARRAY OF COLOURS AND MATERIALS** create comfortable workspaces that attract people seeking coziness
- **DESIGNED** by Patricia Urquiola

“TO WORK IN COMMUNITY IS TO BE FLEXIBLE AND UNDERSTAND MANY WAYS OF BEING, AND BEING TOGETHER.”

Patricia Urquiola

HAPPILY ENGAGED

Culture can't be forced or manufactured. But it can be nurtured. Immerse captures the feeling of home in the workplace. Warm and welcoming, the tables' comfortable, people-centric design keeps everyone inspired and engaged.

POSITIVE ENERGY

It's proven — healthy humans create positive energy that delivers better performance in the workplace. Immerse focuses on our natural movements, creating a landscape for you to sit, stand, and support your overall well-being.



INTUITY

DESIGNED TO ACCOMMODATE
EVER-CHANGING WORK STYLES FOR
COMPANIES ALL OVER THE GLOBE.

Intuity creates a dynamic workplace environment by providing a seemingly **ENDLESS RANGE OF WORKPLACE POSSIBILITIES**. It represents a simple solution to the complex challenge of supporting the constantly evolving needs of people, technology and work styles within a workplace. An easy kit that can be integrated into a floor plate. It is designed to provide workspaces that support the dynamic workplace for the long haul — while giving users easy, intuitive access to everyday essentials.

Intuity's **MODULAR SYSTEM** allows you to **RECYCLE AND REUSE COMPONENTS** to create new workspace solutions to redefine your environments. Each component within Intuity's kit of parts has been carefully crafted to ensure it only uses the essential materials required. It is supported by a regionalised service programme that sources its raw materials from **LOCAL, SUSTAINABLE PARTNERS**.



- **STARTER KITS**
- **ADD-ON KITS**
- **SCREENS**
- Designed by **BANGDESIGN**



KIRON

FOR A WORKSTATION WITH EXTRAS

With its functional design and simple language of form, combined with its diversity of system configurations, Kiron responds to the needs of the modern office, both today and in the future. It can meet the needs of a single workstation, a team bench or a conference solution, and integrates easily into managerial settings and open-plan offices alike.

Kiron enables a multitude of individual workplace designs — from the personal workstation to complex and creative office environments. Fixed Screens create a visual barrier and support privacy and concentration.

Supporting multiple work cultures and work styles, Kiron creates energising environments to facilitate creativity and collaboration.

- Fixed height, manual or **ELECTRIC HEIGHT ADJUSTMENT**
- Wide choice of leg designs (Straight, A-leg or T-leg)
- Easy **CABLE MANAGEMENT**
- **CABLE TRAYS** can be folded out on both sides
- Vertical cable trays
- **SLIDING DESKTOP**
- Optional cable outlets
- Adaptive elements
- Modesty panel available in a variety of materials
- Organiser rail which can accommodate screens
- Monitor holders
- **FLIP-TOP CAP** for easy access to the cable duct from above
- **DOCKING UNITS**, such as for the printer or CPU holder
- Designed by **ANDREAS STRUPPLER**

KIRON IS FLEXIBLE, VERSATILE AND RESPONSIVE.



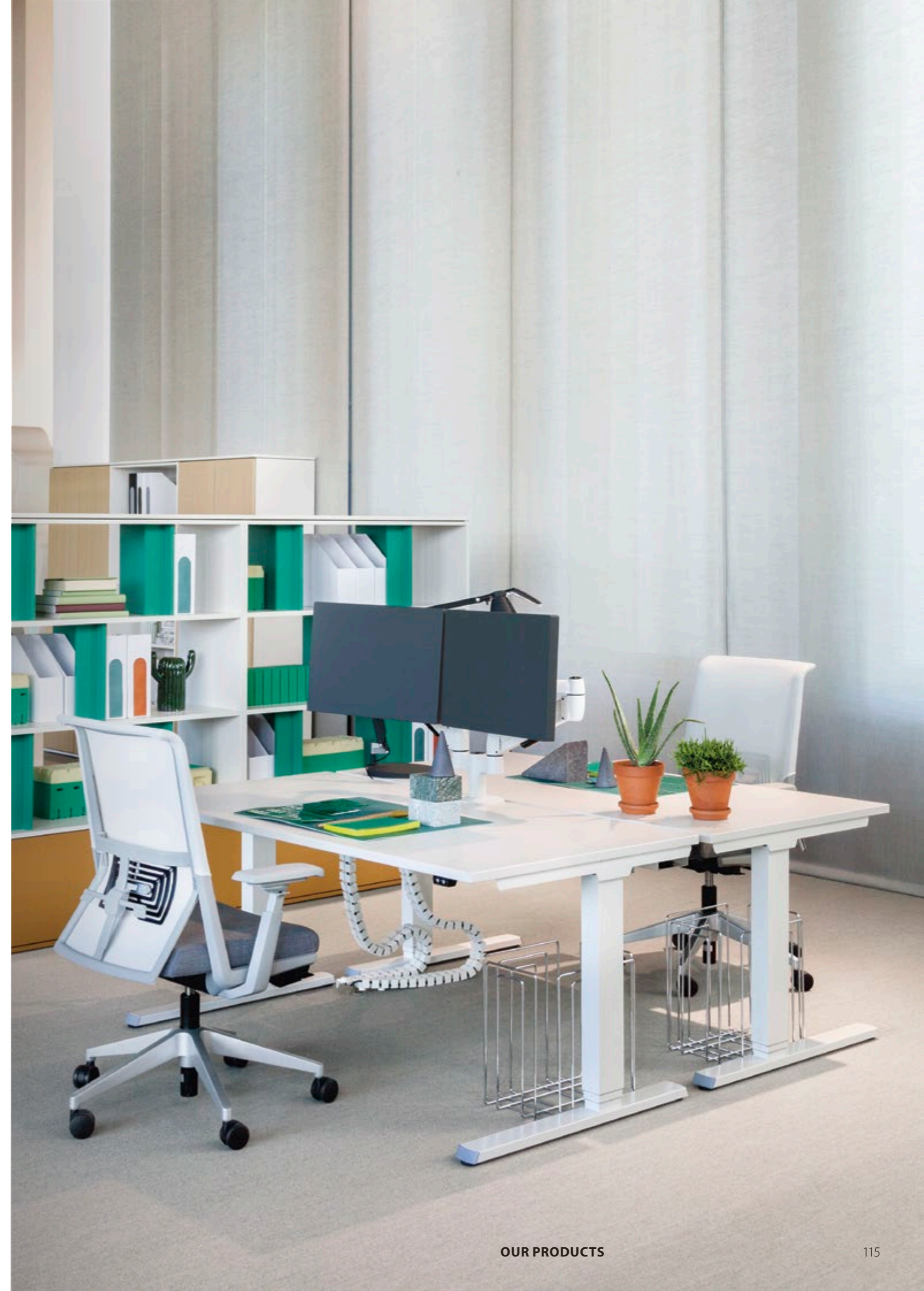


LYFT

MAKING ADJUSTABILITY ACCESSIBLE FOR ALL

- Electrical **HEIGHT ADJUSTMENT** sit stand (65–125)
- easy **CABLE MANAGEMENT**
- Sliding top option
- complete program in sit stand solutions **FREE STANDING** tables and benches

Lyft is a comprehensive height-adjustable system featuring a minimal design profile that is atypical of competitive solutions in its category. It was designed as a platform with few parts, making it extremely cost effective and adaptable over time. It offers easy assembly into numerous configurations, transforming a simple desk into an efficient and integrated workspace.





PLANES

A DESK SYSTEM
DESIGNED FOR ALL
AREAS WHERE PEOPLE
COME TOGETHER FOR
SEMINARS, MEETINGS
AND CONFERENCES



- Designed by **DANIEL FIGUEROA**
- **RED DOT DESIGN AWARD** winner 2008
- **DESIGNPREIS** nominee 2009



Planes will change the way you look at collaborative spaces. With unparalleled breadth and flexibility, it's easy to create exactly the environment you need. Designed for **MOBILE USE**, the work surface can be folded into a **VERTICAL POSITION** by releasing the locking mechanism. This feature allows for the storage or transportation of a large number of tables while demanding **MINIMUM USE OF SPACE**. A classic seminar layout can be assembled in only a few minutes and amended or expanded if required.

Planes is a successfully developed **"ALL ROOM PRODUCT" CONCEPT** — a layout that is open on all sides — offering the right props for each set, allowing the users to create a new layout each day. Planes enables continuously **CHANGING WORK AND CONFERENCES SPACES**: new layouts can be created for each situation and spontaneously reconfigured.

Sleek and ideally proportioned, Planes offers a wide range of aesthetic options from materials to configuration and integrates seamlessly with all Haworth products.

- **MELAMINE TOP**
- Conference Tables
- **FLIP-FLOP** and **TRAPEZOID** tables
- Moderation Elements
- Catering Carts
- Technical Carts
- Universal Carts
- Sideboards
- Shelves
- A **QUICK-RELEASE LOCKING** mechanism allows for easy storage and transportation with minimal use of space.





TIBAS

DISCREET AND HONEST — A NEW BREED OF DESIGN APPEAL

Tibas is a modular desk and table system that features a broad range of components and offers many solutions to satisfy a wide range of work and meeting needs. Designed to be understated and discreet, its desktop appears to float gently and elegantly over its frame in a minimalist approach.

Tibas can be integrated harmoniously into a wide range of work environments; the system not only complies with all applicable office standards, but it can also be combined with any number of additional elements, such as screen panels, pedestals or swivel chairs.

- **VERTICAL CABLE DUCT**
- Sliding desktop (optional)
- Wire or metal cable tray
- Adjustable width **CPU HOLDER**
- Universal Screens
- Variety of **CABLE OUTLETS**
- available with **4-LEG BASE, HEIGHT ADJUSTABLE**
- Fixed screen mount
- Extension desks
- Double-hinged cable tray
- Designed by **HAWORTH DESIGN STUDIO**



YOURPLACE

Designed by Stefan Brodbeck for Haworth, YourPlace reflects the desire for a different type of workplace — one that emphasises and supports personal identity and unique ways of work, all in a more inspiring atmosphere.

YourPlace deliberately mixes different styles. There are no rigid structures and the diversity of shapes and colours serve to stimulate the senses, encouraging positive emotions and creativity. At first appearance, it is just a desk, a wall or storage, but the versatility of the individual elements allows for a vibrant diversity.

Today's technology enables us to choose how and where we work: at home, while travelling, in a café or at the office. However, within the confines of a traditional office, our options for how we work often disappear or are, at best, limited. YourPlace challenges this paradigm by creating a literal landscape within the office that offers individuals a diverse choice of settings to suit their task or mood.



- Variety of desk shapes
- **HEIGHT-ADJUSTABLE** legs
- broad selection of screens and room dividing elements
- Personalisation accessories: safebox, mirror, wireless charger, mobile phone holder
- ATL **LIGHT** by Luceplan
- Designed by **BRODBECK DESIGN**
- **IF DESIGN AWARD** Winner 2015
- **GERMAN DESIGN AWARD** Special Mention 2016





WORKWARE

CONNECT AND SHARE AT THE PACE OF IDEAS.

Whether you work together around a table or around the world, Workware lets multiple users connect, share, and keep ideas flowing. With wireless and cabled connection solutions, you can collaborate easily and inspire team creativity in any location. A comprehensive line of monitor supports and other components integrate with Haworth furniture for a clean aesthetic.

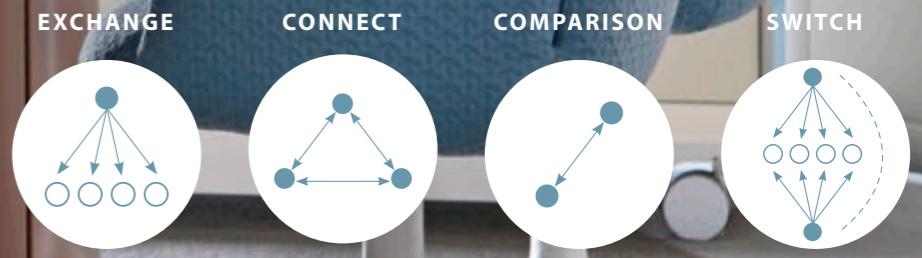
WORKWARE WIRELESS

Workware Wireless supports simultaneous sharing and communication for multiple users in real time and supports security on an enterprise level. Content sharing is simple and intuitive regardless of your physical location or device. Workware Wireless Pro enables everyone to actively participate and contribute well beyond the four walls of the conference room.

THOUGHTFUL TECHNOLOGY

For application flexibility, you can combine Workware Wireless and Workware Cabled solutions, as well as switch between them. With media file sharing and app window sharing, you can work behind the scenes and maintain computer privacy. A simple touchpad gives you complete control of the monitor, cable switching, wireless, and video conferencing functions. Conference technology as its best. An uninterrupted

EXCHANGE OF INFORMATION is necessary for collaboration and creative problem solving. Workware was designed to facilitate communication in the workplace. When colleagues meet, the focus should be on the ideas — not the means of communication.



EXCHANGE
Enable a continuous flow of information without interrupting the collaborative process.

CONNECT
With increased collaboration, there is a greater demand to communicate quickly and easily. Connect – and stay connected – seamlessly.

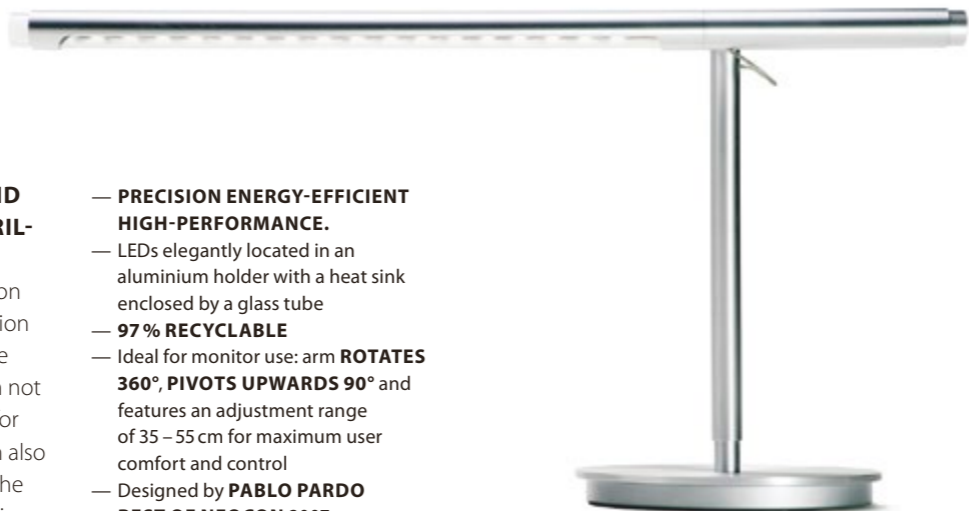
COMPARISON
Compare ideas and presentations to draw conclusions and find consensus.

SWITCH
Traditional presentations can be one-sided; instead, present multiple perspectives simultaneously.

Image includes options/products that are not available for the European market.



BRAZO



CALIBRATED LIGHT CONTROL AND ALUMINIUM BODY ADD UP TO BRILLIANTLY FUNCTIONAL DESIGN

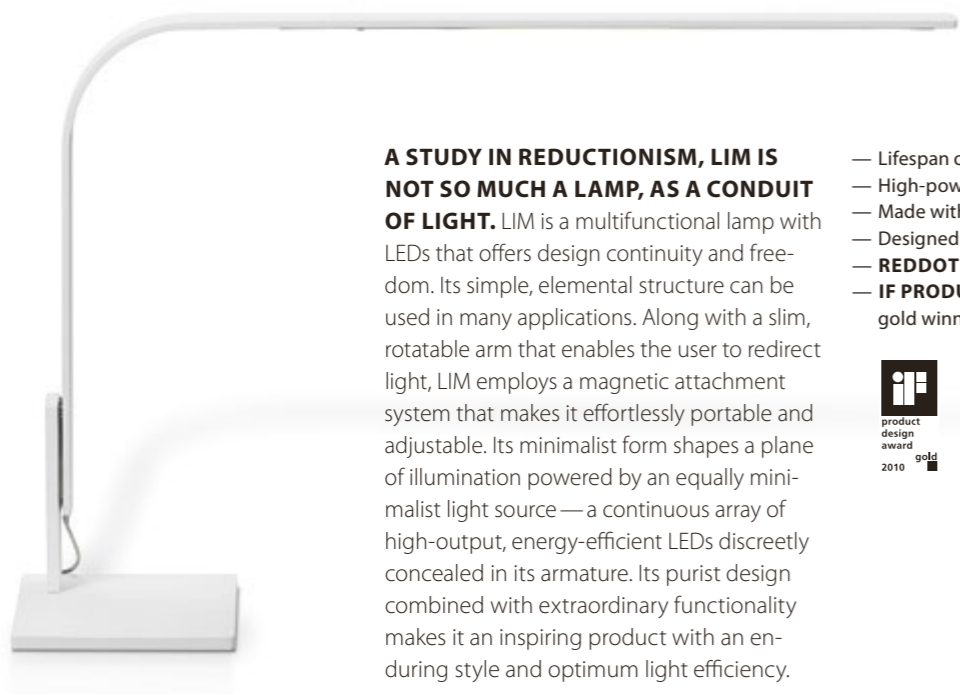
Brazo is a form of LED-based workstation lighting that combines intuitive operation with individual light regulation. It is the first light in which the cone of light can not only be rotated, tipped and dimmed for optimal adaptation to the user, but can also be adjusted for height and the size of the cone of light. Brazo is the perfect lighting solution for any design environment with tough requirements for workplace lighting.

BRAZO is the first lamp to offer focus control — allowing the user to dial into any light spread desired in addition to full dim control.

- **PRECISION ENERGY-EFFICIENT HIGH-PERFORMANCE.**
- LEDs elegantly located in an aluminium holder with a heat sink enclosed by a glass tube
- **97% RECYCLABLE**
- Ideal for monitor use: arm **ROTATES 360°, PIVOTS UPWARDS 90°** and features an adjustment range of 35 – 55 cm for maximum user comfort and control
- Designed by **PABLO PARDO**
- **BEST OF NEOCON 2007**



LIM



A STUDY IN REDUCTIONISM, LIM IS NOT SO MUCH A LAMP, AS A CONDUIT OF LIGHT. LIM is a multifunctional lamp with LEDs that offers design continuity and freedom. Its simple, elemental structure can be used in many applications. Along with a slim, rotatable arm that enables the user to redirect light, LIM employs a magnetic attachment system that makes it effortlessly portable and adjustable. Its minimalist form shapes a plane of illumination powered by an equally minimalist light source — a continuous array of high-output, energy-efficient LEDs discreetly concealed in its armature. Its purist design combined with extraordinary functionality makes it an inspiring product with an enduring style and optimum light efficiency.

- Lifespan of up to **50,000 HOURS**
- High-powered, high-quality **LEDS**
- Made with **29% RECYCLED CONTENT**
- Designed by **PABLO PARDO**
- **REDDOT DESIGN AWARD** winner 2010
- **IF PRODUCT DESIGN AWARD** gold winner 2010



CIRCA

REVOLUTIONARY YET FAMILIAR

Circa table and floor lamps shed balanced ambient light in an infinite number of positions. With a 45° shade tilt and 360° shade rotation, the circular, flat-panel LED disc moves fluidly above its axis point. It illuminates with just a touch for three levels of intensity. A USB charging port is integrated into both the floor and table versions. Perfect for versatile lighting in the office.

- 0 – 45° shade tilt and 360° shade rotation make Circa unique
- A simple touch switch allows for **THREE LEVELS OF LIGHT INTENSITY**
- An integrated USB port charges your mobile devices



ATL LIGHT

A WORK LIGHT THAT CAN SET A SIGNAL

One example of flexible innovation is the ATL light by LUCEPLAN. The outer lampshade is able to change its colour, thanks to LED technology. The shade can function as an indicator of one's mood, as a signal for others (Red: do not disturb; Green: available) or as a way to demarcate one's space or to signal an unoccupied workstation.

- Outer lamp shade **CONTROLLED BY TOUCH**
- High-powered, high-quality **LEDS**
- can be combined with **YOURPLACE** landscape
- can be combined with Drift Screens
- Designed by **BRODBECK DESIGN**





BE_HOLD

BOLD, BEAUTIFUL
STORAGE.



Be_Hold was designed in collaboration with Patricia Urquiola to elevate the everyday work experience. From shelves and cupboards to private lockers and other open elements, Be_Hold blends function and beauty to create a truly unique, architectural solution.

Be_Hold's human-focused design allows you to structure your workplace to support different work styles, either by dividing the space for privacy, or creating a meeting table built right into the storage unit with integrated power and a top tray for creative teamwork.





- **DESIGNED BY** Patricia Urquiola
- **WIDE RANGE** from standard to elevated design, addresses a large variety of customer needs
- **COLOURS** create a balance between warm and cool, similar to those found in nature
- **INTEGRATES** with Haworth Europe portfolio, enabling new landscapes with different product combinations
- **FUNCTIONAL ELEMENTS** meeting point + locker with electrification + top tray
- **BE_HOLD DESIGN** Elegant and modular range with upgrades designed by Patricia Urquiola
- **BE_HOLD ELEMENT** Expansive storage portfolio with a light design language
- **GERMAN DESIGN AWARD** nominee 2018

Be_Hold seeks to structure spaces and support **DIFFERENT WORK STYLES** — from highly collaborative to focused — while leveraging design elements that transform your workplace. Perforated metal, an expansive palette of finishes, back and front panels covered with fabric, wood tops, open elements, lockers with electrification and meeting points are only a few of the elements that help Be_Hold create **FUNCTIONAL SPACES** with an individual personality, without dividing teams and cultures.

The finishes palette balances warm and cool colours drawn from nature, while perforated metal, fabric-wrapped backs and wood tops give functional offices an individual personality without dividing teams and cultures.



GERMAN
DESIGN
AWARD
NOMINEE
2018



DRIFT



Drift screens were designed to meet the needs of an increasingly nomadic workforce, with workers who require a variety of focused and collaborative applications throughout their day. Featuring a clean profile and offered in a variety of expressive colours, Drift adds a distinctly residential touch to traditional desktops with the added benefit of increasing noise absorption in an open office plan. The Drift collection is designed to integrate seamlessly with all of Haworth's existing desking and storage product lines and can be assembled and disassembled with ease.

- **CONTEMPORARY** upholstered aesthetic
- available in standard Haworth fabric collections
- **TOOL-FREE** design, for easy installation
- provides **ACOUSTIC ABSORPTION** (up to class B)
- **INTEGRATED** cable management and cable routing
- **ACCESSORIES**, including tool rail, available to suit wide-range of applications
- designed for **EASY PLANNING** alongside other Haworth furniture solutions
- **PARAMETRIC DESIGN**, allowing easy customisation to meet most requirements

CARVE OUT YOUR NICHE,
OR CREATE A NEW ONE.

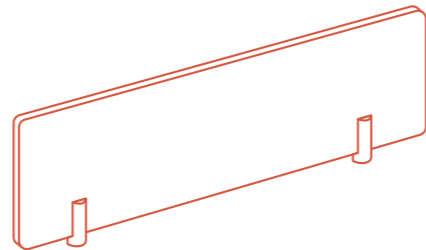
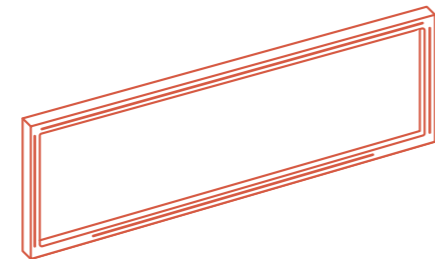




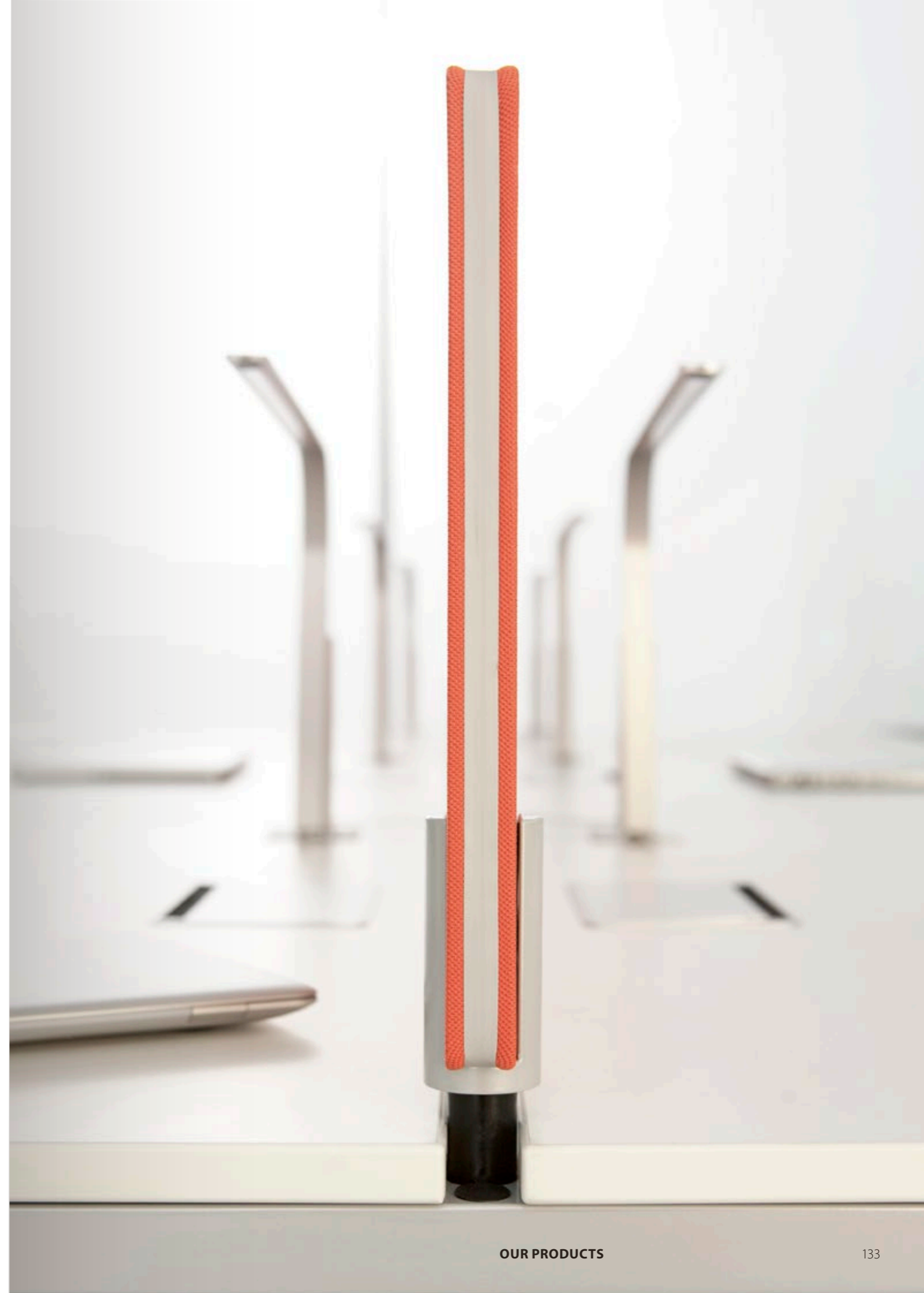
UNIVERSAL SCREENS

INTEGRATED PRIVACY SOLUTION

- Traditional desk screen solution
- **COMPATIBLE** with all Haworth desking systems
- available in two configurations:
 - FRAMED:** with aluminium frame, and light;
 - NO FRAME:** Upholstered, glass & frosted plexi-glass options available
- Upholstered, glass & frosted plexi-glass options available
- **UPHOLSTERED** available in standard Haworth fabric collections
- **ACOUSTIC ABSORPTION** (up to class C) option available for framed versions
- **ACCESSORIES**, including **TOOL RAIL**, available to suit wide-range of applications



The Universal Screen product range was developed by Haworth Design Studio to provide a single common panel solution to integrate across the range of Haworth's desk systems.





STORAGE & SPACE DIVIDERS

METAL PEDESTALS 2.0

- Available in **VARIOUS HEIGHTS AND DEPTHS**
- **DIFFERENT SHAPES AND THICKNESSES** of top, matching the main Haworth desk ranges
- Pedestals are fitted with a **LOCK** above the top drawer
- The **HANDLE IS INTEGRATED** into the front of the drawer



PHARMACY CABINETS

- The slim melamine design fits into **SMALLER SPACES**
- cabinets can be used as **DIVIDERS BETWEEN WORK-PLACES** to use space efficiently
- various **INTERNAL ACCESSORIES**
- **WIDE RANGE OF MATERIALS AND COLOURS** to perfectly match your office



BE_HOLD

- **DESIGNED BY** Studio Urquiola
- **WIDE RANGE** from standard to elevated design addresses a large variety of customer needs
- **COLOURS** reflect a balance between warm and cool, similar to those found in nature
- **INTEGRATES** with Haworth Europe portfolio, enabling new landscapes with different product combinations
- **FUNCTIONAL ELEMENTS** meeting point + locker with electrification + top tray
- **BE_HOLD DESIGN** Elegant and modular range with upgrades designed by Patricia Urquiola
- **BE_HOLD ELEMENT** Expansive storage portfolio with a light design language



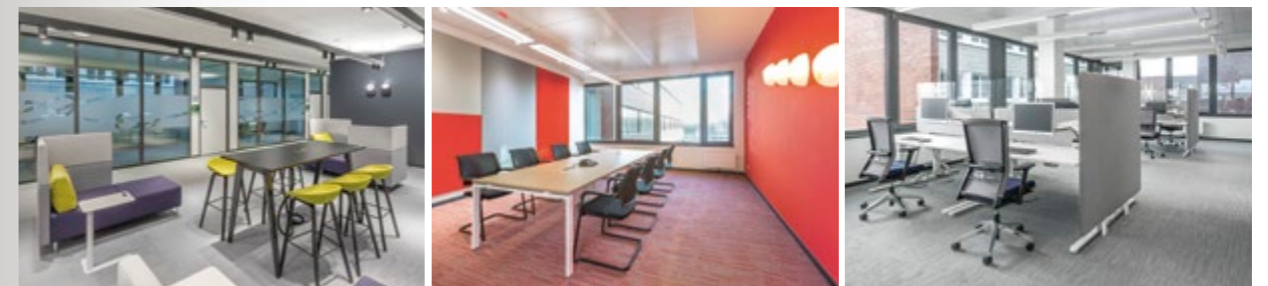
HUGO

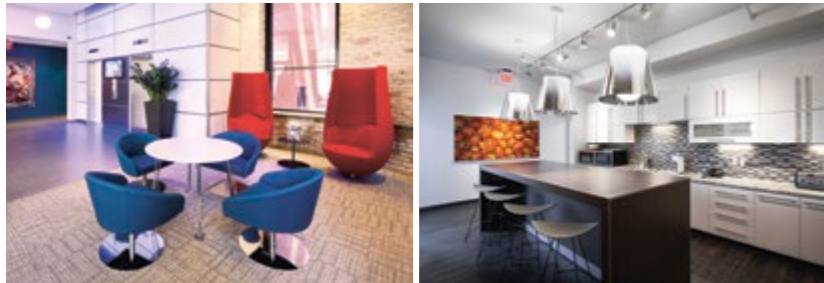
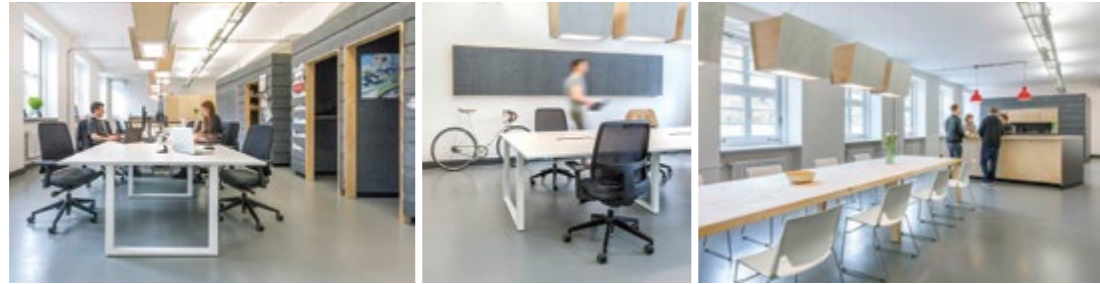
- **EXCEPTIONAL RANGE** of cupboards, drawer units and combinations of the two
- **FEATURES** shelves, drawers, dividers, removable or fixed hanging file frames and even wardrobe fittings
- optional recessed handles, castors and tops **TO MATCH** other furniture lines



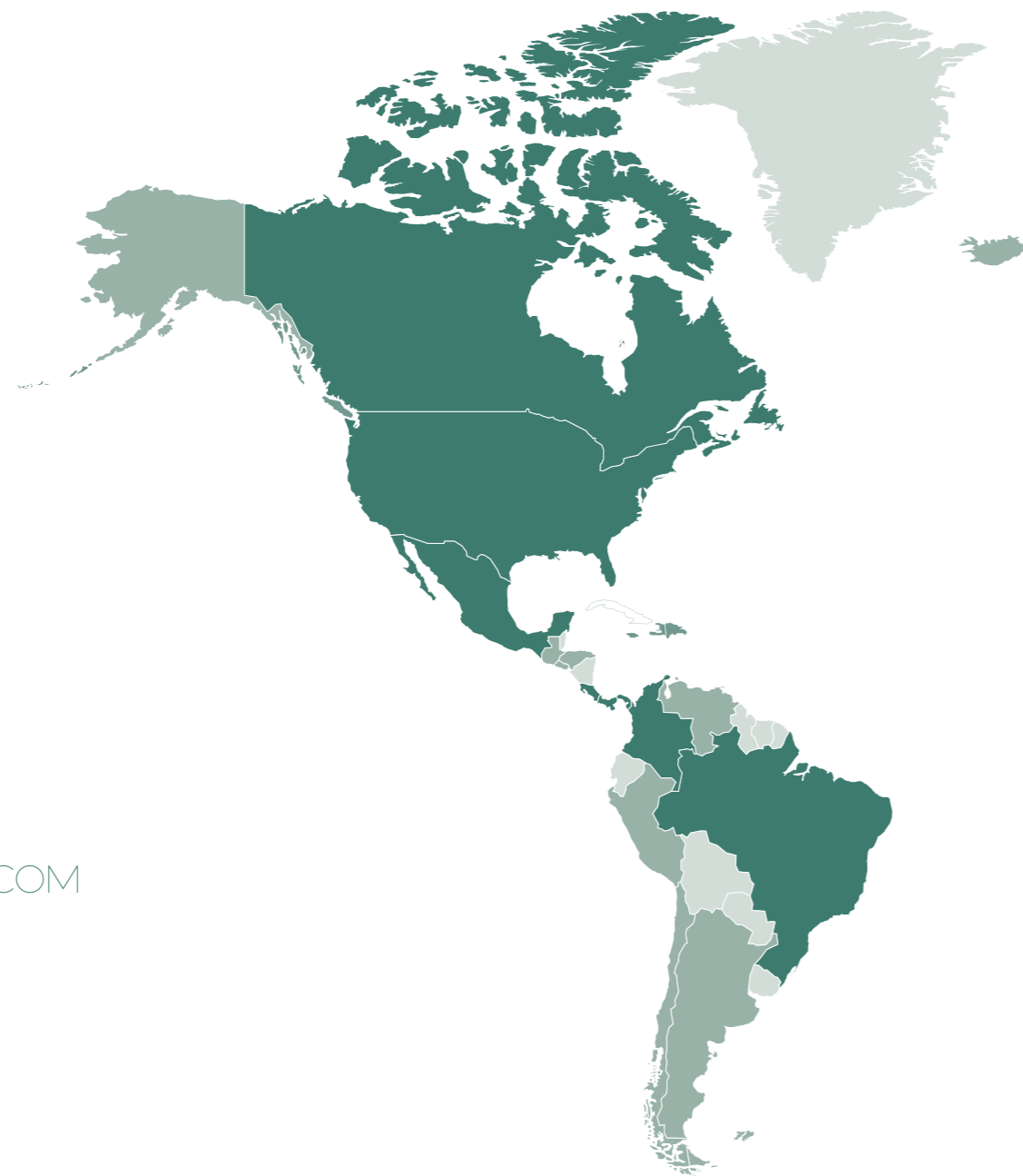
REFERENCES

We have supported thousands of clients around the world. How can we support you?

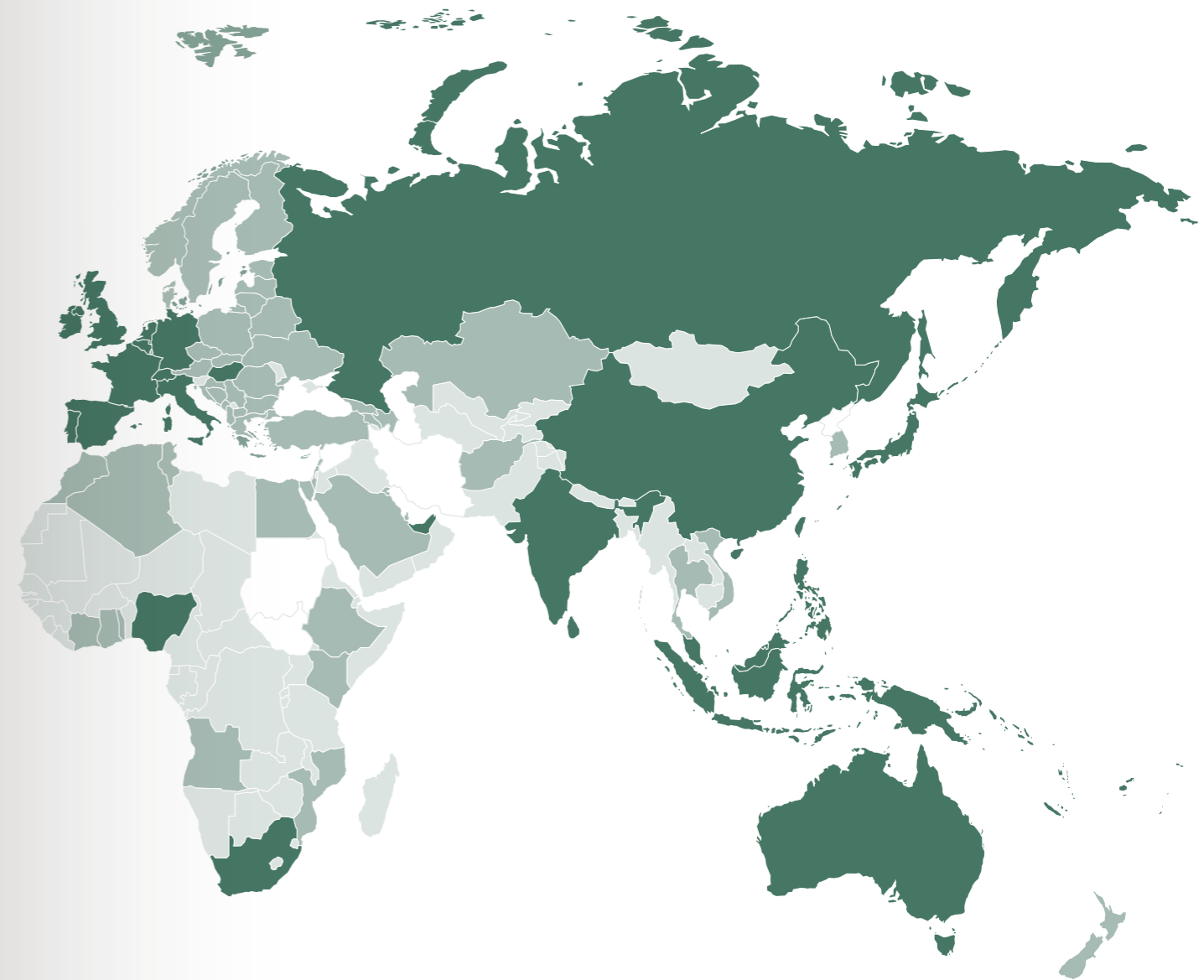




LET'S GET IN TOUCH ...



EU.HAWORTH.COM



■ Haworth presence ■ Haworth dealer ■ Serviced markets

IMPRINT

PUBLISHED BY

Haworth GmbH
info.eu@haworth.com
eu.haworth.com

AUTHORISED REPRESENTATIVE

Henning Figge, Managing Director

COPYRIGHT

2017, Haworth GmbH

LAST REVISED

September 2017

CONCEPT DEVELOPMENT, EDITING AND DESIGN

PLEXGROUP, Berlin, Germany

PHOTOGRAPHS BY

Ulf Salzmann p. 117 – 119, landscape foldouts
Patricia Parinejad p. 62 – 65, 115, 119 – 121, 126 – 131
Uzi Porat p. 136 top (1 picture)
Yoav Peled p. 136 bottom (3 pictures)
others: Haworth

PRINTING

Ruksaldruck, Berlin, Germany



CONTACT

OFFICIAL DEALER IN UKRAINE

KIEV BUILDING ENTERPRISE

WWW.KBE.COM.UA

[FACEBOOK/KBE.COM.UA](https://www.facebook.com/kbe.com.ua)

+380 50 387 17 62

INFO@KBE.COM.UA